

Southern home.

Autumn Edit
Personal Style

SEPTEMBER-OCTOBER 2023

\$14.99US \$16.99CAN



DISPLAY UNTIL NOVEMBER 6, 2023

SUSTAINABLE DECOR
ECO-FRIENDLY BRANDS
TO UPGRADE YOUR HOME



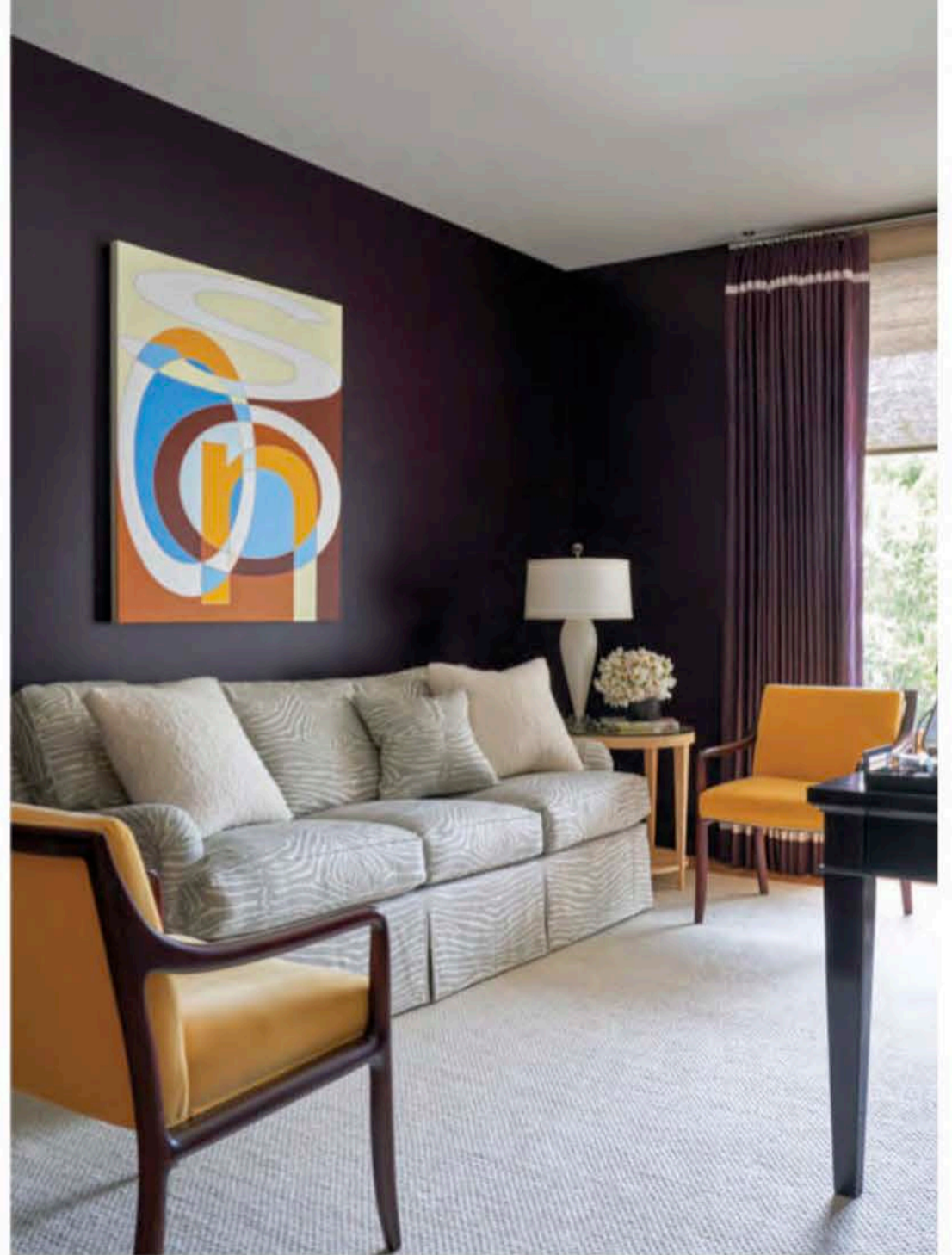
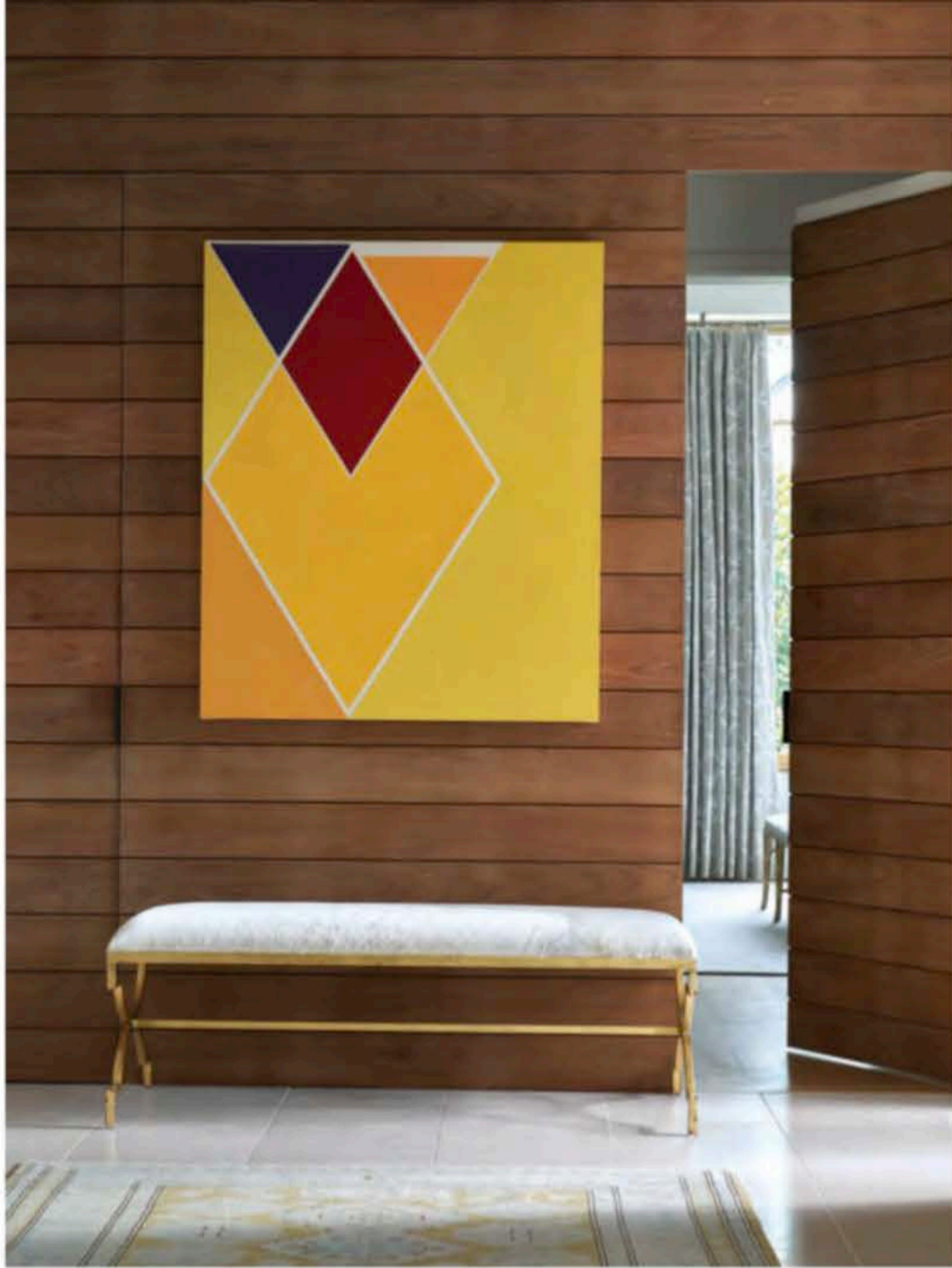
“She is drawn to neutrals and doesn’t like a lot of patterns or bold colors; essentially, she wanted it to feel clean and comfortable.”

Built in the early 2000s, the designer notes the residence had a lot going for it, including a layout conducive to family life and entertaining as well as an abundance of timeless millwork. “When I see a house that has great millwork—with a geometric or grid-like style—I like to stick with those traditional bones and then bring in the more modern touches with the furnishings,” Simmons says.

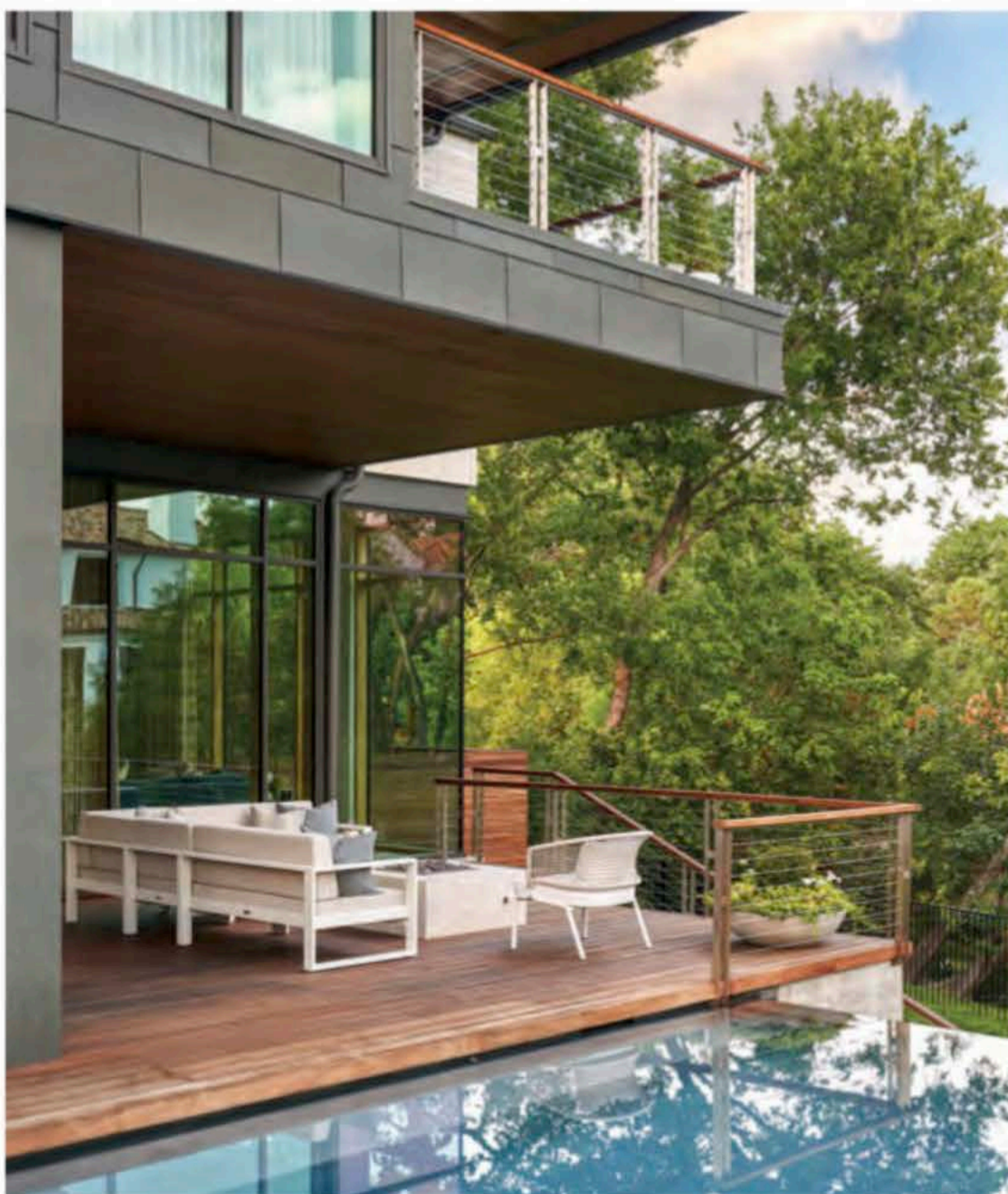
While most of the home received cosmetic updates, such as fresh paint, new lighting, and updated flooring, the kitchen and its adjoining family room and breakfast nook got a full renovation to create a more continuous communal space. The kitchen was reconfigured to include a large island where homework can happen alongside snack time, while the walls of the family room, formerly covered in a faux stone treatment, were streamlined with drywall and the ceiling was vaulted. This resulted in an open, casual area that has become the family’s main hangout. The breakfast nook adheres to this

The biggest transformation came in the kitchen and adjoining family room and breakfast nook. The neutral palette is uninterrupted, allowing the family’s day-to-day activities and conversations to be the focus, yet style was not sacrificed. “These spaces have a bit of a casual, California feel now,” Simmons says, noting the couple’s previous home on the West Coast. The screened porch was updated with informal furnishings that invite the family and their guests to kick back and relax.





Clockwise from top left: Artwork by Larry Zox adds a colorful wow moment set against the ipe walls. A saturated dark plum hue envelops the study and provides an ideal backdrop for artwork by Aaron Parazette. A wall of glass opens to the outdoor wooden covered deck.



This was the second project Wagner has worked on with the Emanuelsons, and a third is in progress, so the designer really understood how the family lives and how they use their spaces. “We wanted the interiors to be clean and elegant, yet warm, cozy, and comfortable with soothing color and texture, but we also have three granddaughters under the age of three and wanted to be sure that nothing was so precious that it would be off-limits to them,” says Claire. Many of the outstanding lamps and overhead lighting were designed by interior designer Jan Showers, a personal friend of Claire and Wagner. These include a Murano glass chandelier in the dining room as well as numerous glass and ceramic table lamps that inject a sense of colorful liveliness.

The extensive contemporary art collection (many inherited from Dwight’s father) graces the walls in every space, so Wagner kept that in mind, making decorating choices that temper the works while giving them starring roles at time. Claire admits it was a difficult balance to achieve, but Wagner nailed it, she says. The Emanuelsons trusted their team of professionals and couldn’t be more delighted in this new life chapter. “We love hosting small dinner parties, large cocktail parties, pizza and movie nights, Easter Egg hunts—you name it,” says Claire. “But we are just the happiest when we are surrounded by all the wonderful people in our lives.”

Please note that items not listed are privately owned.

COVER

Design: Melissa Hall Simmons, Studio MH.
Photography: Rett Peek.

MASTHEAD

Page 7: Serendipity Scroll in Ivy, Sarah Bartholomew Collection for Lee Jofa.

FROM THE EDITOR

Page 9: Photography, Jean Allsopp. What We're Seeing: Top image: Bench Oxley, Savana, Eichholtz. Middle: Bowie Chest, blue leather, Century Furniture. Bottom: Amphora Abaca rug in soft green, Patterson Flynn.

ON TREND

Pages 13–18: Sustainable products.

DESIGNER Q & A

Pages 19–22: Mallory Mathison Glenn, Mallory Mathison Inc., mallorymathison.com.

STYLE LIBRARY

Page 25: *Defining Chic* by Carrier and Company Interiors, Rizzoli ©2023.

Page 27: *Evoke* by Nina Magon, Monacelli ©2023.

Page 30: *HOME: The Residential Architecture of D. Stanley Dixon*, Rizzoli ©2023.

ANTIQUES OBSESSION

Page 31–33: *Monograms and Antique Linens*, Hoffman Media 2016.

Page 33: Bottom image: Antique sterling silver vestas & minaudiere, French Garden House.

PUSHING THE ENVELOPE

Pages 35–42: Interior design: Traci Zeller, Traci Zeller Interiors. Architecture: Garrett Nelson, Garrett P. Nelson Studio. Builder: Knight Residential Group.

Pages 35–36: Foyer: Bench, Oly. Console, Bernhardt. Artwork, Lisa Noonis, Anne Neilson Fine Art. Sconces, Visual Comfort.

Pages 37–38: Dining room: Table, Julian Chichester base with Kauffman & Co. top, Traci Zeller Interiors. Chairs, Arteriors.

Sconces, Visual Comfort. Artwork, Stephen Wilson Studio. Living room: Sofas, Vanguard Furniture. Bookshelves, Mr. Brown Home. Mirror, Mr. Brown Home. Cocktail table, Artistica Home. Artwork, Anne Neilson Fine Art.

Pages 39–40: Kitchen: Counter stools, SUNPAN. Breakfast table, Worlds Away. Chairs, Four Hands. Pillows, Traci Zeller Interiors. Artwork, Alexis Walter, Traci Zeller Interiors. Family room: Sectional, Hickory Chair. Cocktail ottomans, Four Hands. Game table, Vanguard Furniture. Game table chairs, Ballard Designs.

Pages 41–42: Daughter's bedroom: Bed, CB2. Bed linens, Amalia Home Collection. Bedside tables, Universal Furniture. Accent chair, CR Laine. Artwork, Traci Zeller Interiors. Primary bedroom: Bed, Vanguard Furniture. Bench, Oly. Daybed, CR Laine. Chandelier, Oly.

LOWCOUNTRY LUXE

Pages 43–52: Interior design: Abigail

South, Abigail Interiors. Architecture: Norman Davenport Askins, Architect. Construction: Jerry Bonner, Bonner Buchanan. Wood floors: Burchette & Burchette.

Pages 45–46: Entry hall: Chandelier, Niermann Weeks. French side chairs, Ida Manheim Antiques. Bombe chest, Franya Waide Antiques and Interiors. Rug, Wool by Hand. Living room: Sofas, Duralee. Coffee table, Stock Farm Antiques. Drapery fabric, Duralee. Stone mantel, Architectural Accents. Chandelier, Niermann Weeks. Paneled walls, Bryan Dumas.

Pages 47–48: Dining room: Chandelier, David Iatesta. Table and chairs, Lee Smith Antiques & Design. Rug, Wool by Hand. Drapery fabric, Schumacher. Chair fabric, Duralee. China cabinet, Jere's Antiques. Kitchen: Paint color, Benjamin Moore, Winter White. Bar stools, Serena & Lily. Chandeliers, Niermann Weeks. Family room: Sofa, custom with Schumacher velvet. French card table with chairs, Franya Waide Antiques and Interiors. Rug, Wool by Hand. Drapery fabric, Duralee.

Pages 49–50: Bar: Cabinets, Kingdom Woodworks. Paint, Sherwin-Williams, Rainstorm. Copper ceiling treatment, Anne Bielowicz. Sitting room: Paint, Sherwin-Williams, Rambling Rose. Cabinet, Kingdom Woodworks. Chandelier and ottoman, MacKenzie-Childs. Drapery fabric, Duralee. Garden: Iron gate, Iron is King. Guest room: Beds, Jacques's Antiques. Paint color, Benjamin Moore, Springfield Tan. Ceiling paint color, Sherwin-Williams, Softer Tan. Corona fabric, Schumacher. Rug, Wool by Hand. Blue guest room: Paint color, Benjamin Moore, Sweet Innocence. Drapery fabric, Highland Court. Bunk room: Carpentry, Mark Silvers. Paint color, Benjamin Moore, Winter White. Drapery and cushion fabric, Schumacher.

Pages 51–52: Primary bedroom: Wallpaper, Phillip Jeffries. Chandelier, Niermann Weeks. Embroidered drapery fabric, Schumacher. Floral fabric, Duralee. Chair fabric, Schumacher. Bathroom: Paint color, Benjamin Moore, Simply White. Chandelier, Niermann Weeks. Ceiling finish, Jill Biskin. Cabinetry, Premier Woodworks.

REMAINING NEUTRAL

Pages 53–62: Interior design: Melissa Hall Simmons, Studio MH. Contractor: Ashley Patrick, L&F Construction.

Pages 53–54: Living room: Paint, Farrow & Ball, Skimming Stone. Art, William McClure. Coffee table, Century Furniture. Exposed-leg chairs, Hickory Chair. Daybed, Baker Furniture. Entry: Paneling paint, Farrow & Ball, Skimming Stone. Wall paint, Benjamin Moore, China White. Light fixture, Paul Ferrante. Table, Century Furniture. Art, Jennifer Daly. Stools, Hickory Chair.

Pages 55–56: Living room: Paint, Farrow & Ball, Skimming Stone. Daybed, Baker Furniture. Rug, Patterson Flynn. Exposed-leg chairs and console, Hickory Chair. Patterned pillow fabric, Fortuny. Art over fireplace, Steven Seinberg. Light fixture, Paul Ferrante. Coffee table, Century Furniture. Side table, Highland House. Lamps, Visual Comfort.

Pages 57–58: Dining room: Wallpaper,

Nobilis. Rug, Lee Jofa. Buffet, Hickory Chair. Light fixture, Visual Comfort. Chairs, Hickory Chair. Lamps, Arteriors. Art, Laura Naples. Etagere, Bradley. Glasses on etagere, Estelle Colored Glass.

Page 59–60: Family room: Paint, Benjamin Moore, China White. Sectional and coffee table, Highland House. Chairs, Lee Industries. Rug, Stark. Breakfast nook: Table, Chaddock. Chairs, RH. Chair upholstery, Studio MH. Light fixture, Visual Comfort. Screened porch: Sofa and chairs, Sutherland Furniture.

Woven chair, Janus et Cie. Kitchen: Barstools, Arteriors. Pendants and sconces, Visual Comfort. Cabinetry paint, Benjamin Moore, China White. Faucet, House of Rohl. Countertops, Aria Stone Gallery.

Page 61–62: Daughter's bedroom: Bedding, Pottery Barn. Bed, Highland House. Bedside chests, Villa & House. Lamp, Visual Comfort. Desk and light fixture, RH Teen. Flooring, Tom January Floors. Window treatment fabric, Schumacher. Window treatment trim, Samuel & Sons. Daughter's bath: Wallcovering, Thibaut. Mirror, Made Goods. Sconces, Visual Comfort. Countertops, Caesarstone. Son's room: Wall paint, Benjamin Moore, Coventry Gray. Trim paint, Benjamin Moore, White Dove. Window treatment fabric, Schumacher. Window treatment trim, Samuel & Sons. Bed, Lee Industries. Bedding, Pottery Barn. Chest, Villa & House. Rug, Stark. Powder bath: Washstand, RH. Wallpaper, Rebecca Atwood through JAMES Showroom. Mirror, Oly. Sconces, Visual Comfort. Trim and nickel gap paint, Benjamin Moore, China White. Primary bedroom: Bed, Oly. Window treatment fabric, Holly Hunt. Daybed, Century Furniture. Chair, Chaddock. Cocktail tables, Highland House. Bedside lamp, Visual Comfort. Wallcovering, Phillip Jeffries.

FRESH START + FRESH STYLE

Pages 63–70: Architecture: Mark Hoesterey, SHM Design. Interior Design: Shelby Wagner, Shelby Wagner Design. Builder: Mark Danuser, Tatum Brown Custom Homes. Landscape architect: MESA Design Group.

Pages 63–64: Foyer: Mirror and lamp, Jan Showers. Console, Quintus. Stool, Kelly Wearstler for Lee Jofa in Hodsoll McKenzie Tate Velvet. Living room: Art, Jim Brooks. Chandelier, Jonathan Browning. Drapery fabric, David S. Gibson. Cocktail table, Matthews & Parker. End table, table, and floor lamps, Jan Showers. Floor lamp, Visual Comfort. Custom ottoman fabric, Fiji in Straw Hut, Rose Tarlow. Rug, Grand pattern, Holland & Sherry.

Pages 65–66: Living room: Custom banquette fabric, Weiland, Hodsoll McKenzie, with Samuel & Sons trim. Pillow fabric, Hermès and Sandra Jordan. Dining room: Chandelier, lamps, and sideboard, Jan Showers. Wallcovering on ceiling, Rembrandt, Phillip Jeffries. Drapery, Andes, Holland & Sherry, with custom embroidery. Dining chairs, Nickey Kehoe in Jerry Pair Leather. Art, Dan Christiansen.

Page 67–68: Bar: Wallpaper, Island Raffia in Island Malta White, Phillip Jeffries.

Quartzite, Taj Mahal. Faucet, Waterworks. Kitchen: Barstools, Maiden, McGuire, in Loro Piana Millwood fabric. Custom shades, Custom Shades of London, in Theo Delila Stripes on Sand. Breakfast room: Chandelier, Fiore, David latesta. Saarinen table, Knoll. Chairs, Hollywood at Home in Edelman Leather Royal Hide. Art, Linnea Glatt.

Pages 69–70: Study: Drapery fabric, Glacis in Fig, Rose Tarlow, with Samuel & Sons trim. Shades, Hartmann & Forbes. Sofa, custom, in Brunschwig & Fils Le Zebre. Lamp, Jan Showers. Rug, Presta in Sand, Stark. Art, Aaron Parazette. **Pool deck: Sectional and chairs, Janus et Cie.** Primary bedroom: Chandelier, Visual Comfort. Drapery fabric, Gillow Stripe, Hodsoll McKenzie. Bed, custom, in Travers Arden Chevron fabric. Nightstands, Jarin, Made Goods. Lamp, Jan Showers. TV cabinet, custom. Rug, Kubra in Creme, Stark. Art, Dan Christiansen. Primary sitting area: Drapery fabric, Gillow Stripe, Hodsoll McKenzie. Sofa, Hickory Chair. Pillow fabric, Townline Road, Schumacher. Chair, custom, in Hodsoll Mckenzie Halen fabric. Rug, Metro Garret in Antique, Stark. Primary bath: Plumbing fixtures, Waterworks. Grasscloth wallcovering, Kravet. Shades, Hartmann & Forbes.

FAMILY FOCUSED

Pages 71–80: Interior design: Ashley Gilbreath, Ashley Gilbreath Interior Design. Architecture: David Baker, Tippet Sease Baker Architecture.

Pages 71–72: Formal living room: Stripe chair with ottoman, TCS Designs. Grey/white pillow, Lindsey Cowles. Floor lamps & white lamp, Visual Comfort. Grey velvet sofa, Lee Industries. Side tables & glass cocktail table, Noir Furniture. Abstracts, Josh Young. Landscape, Megan Lightell, sourced from Anne Irwin Fine Art.

Pages 73–74: Dining room: Side chairs, Hickory Chair. Skirted chairs, Lee Industries. Beaded light fixture, BOBO Intriguing Objects. Dining table, Hickory Chair. Living room: Two white chairs, Highland House. Two grey sofas, Verellen. Tan pillows on couch, Maharam. Tan/black pillows on couch, Schumacher. Lucite floor lamp and gold floor lamps, Visual Comfort.

Pages 75–76: Outdoor living area: White chairs, Lee Industries. Floor covering, Stanton Carpet. Chandelier, Visual Comfort. Sofa, Summer Classics. Cocktail table, Made Goods. Counter stools, Harbour.

Pages 77–78: Kitchen: Pendants, Square Feathers. Floor covering, Stanton Carpet. Dining chairs, Furniture Classics. White chair, Lee Industries. Green velvet banquette, custom in Pindler fabric. Leather chair, Gregorius Pineo, covered in Fabricut. White lacquer dining table, Worlds Away.

Pages 79–80: Primary bedroom: Drapery, Fabricut. Light fixtures, Visual Comfort. Nightstand, Bliss Studio. Headboard, John Phillips. Lumbar, Kravet. Bed skirt, Fabricut. Floor covering, Stanton Carpet. Chest, Parish by Ashley Gilbreath. Primary bedroom sitting area: White chaise longue, Highland House. Pillows on chaise longue, Radish Moon. Bust, Parish by Ashley Gilbreath. Primary

Bathroom/closets/dressing areas: Bathroom Sconce, Visual Comfort.

SOUTHERN CHIC

Pages 81–88: Architectural designer: Matthew C. Voelkel, StudioMV. Interior design: Ellie C. Voelkel, StudioMV. Landscape design: Brad Yarborough and Cameron Cantrelle, Smoketree Landscape.

Pages 81–82: Front exterior: Stucco and brick paint, Benjamin Moore, November Rain. Siding paint, Benjamin Moore, White Heron. Shutter paint, Benjamin Moore, Brushed Aluminum. Formal living room: Paint, Benjamin Moore, Cole Stone in high gloss. Sofas, Scandinavian in Dove Velvet, Eloquence. Bench, Meline Bench, Zentique, in Fabricut Rivoli Velvet Prairie. Kelsie accent tables, Arteriors. Lauren coffee table, Villa & House. Zebra print chairs, Petricia Thompson Antiques. Framed intaglios, Frank Thomas Gallery. Rug, Eclipse in Winter Walk, Fibreworks. Art, Matt Voelkel. Linen and artichoke pillows, Square Feathers.

Pages 83–84: Foyer: Paint, Benjamin Moore, Baby Fawn. Conrad table, Palecek. Rug, Loloi. Verona chests, Modern History. Italian mirrors, Karla Katz Antiques. Greenlea table lamps, Currey & Company. Large square lantern, Visual Comfort. Formal dining room: Wallpaper, Jaiden Fossil, Stroheim. Collector's cabinet, Global Views. Rug, Eclipse in Winter Walk, Fibreworks. Architectural art, Frank Thomas Gallery.

Candlesticks, 2 lite glass tubes, Global Views. **Pages 85–86:** Family room: Paint, Benjamin Moore, Decorator White. Belgian Linen slipcovered sofas. Triad floor lamp, Visual Comfort. Ava sofa table, Interlude Home. Rug, Habsburg Fawn, Lintot. Custom art, Matt Voelkel. Stella pillows, Square Feathers. Adeen side table, Made Goods. Chandelier, Nottaway, Currey & Company. Gallery: Paint, Benjamin Moore, Decorator White. Bamboo console table, Modern History. Leather poofs and Impression lamp in green, Global Views. Kitchen: Paint, Benjamin Moore, Decorator White. Dining table and chairs, Broderick dining table, Fritz side chair, and Conrad counter stools, Palecek. Chandeliers, Regine, Global Views. Marble countertops, Tesoro marble, Tuscan Stone. Back porch: Santa Barbara side chairs, Summer Classics. Parsons armchairs, Southern Home.

Pages 87–88: Primary bedroom: Benjamin Moore, Brushed Aluminum. Bed, TCS Templeton Headboard and foot rails, in Stroheim Epicure Linen Velvet in Platinum. Custom TV cabinet, designed by studioMV, constructed by Jackson Cabinets. Lounge chair, Severn, Global Views. Floor lamp, Parish, Visual Comfort. Rug, Saturn in Pebble, Lintot. Powder room: Custom Bianco Rhino marble waterfall apron front sink. Sconces, Huntley, The Urban Electric Co. Wallpaper, Lillies, Gucci. Study: Benjamin Moore, Dakota Woods Green. Ebonized classical writing table, Modern History. Art, Steve Penley. Primary bath: Paint, Benjamin Moore, Decorator White. Woven pendant, Palecek. Bianco Neve Leather countertops, Tuscan Stone.

BLUE RIDGE BEAUTY

Pages 89–98: Architecture: Parker Platt, PLATT. Interior design: Katie Jackson, PLATT Home. Builder: Dan Collins, Glennwood Custom Builders.

Pages 89–90: Exterior: Local stone, cedar siding, oak timbers, and slate-and-copper roofing, Parker Platt, PLATT.

Pages 91–92: Great room: Custom sofas and chairs, Lancaster Custom Crafted Upholstery. Custom concrete waterfall coffee table with metal inlay, Making Whole. Side table in foreground, Rose Tarlow. Sconces, Urban Electric. Limestone fireplace, François & Co. Fine art over fireplace, Lynn Boggess. Custom iron chandelier, The Heirloom Companies. Rug, Designer Carpets. Oak gate-leg sofa table, Holland Macrae. Upholstered chairs behind sofa, Lee Industries. Fine art turned bowl, George Peterson. Stairwell: Custom iron railing, The Heirloom Companies.

Pages 93–94: Library: Custom grand-scale sheer draperies, window seat cushion, pillows, NFDrapery. Gold silk roman shades, Cowtan & Tout fabric. Sheer draperies, Cowtan & Tout. Desk chair, Verellen.

Pages 95–96: Dining room: Custom drapery, Cowtan & Tout. Chandelier, Julie Neill for Visual Comfort. Custom dining chairs, Artistic Frame. Custom dining chair fabrics, seat, Rogers & Goffigon mohair velvet, and back, Endurance vegan leather. Pottery dinnerware, Simon Pearce. Crystal glassware from owner's own collection. Pantry: Vintage light fixture sourced by owner. Custom roman shade, NFDrapery in YOMA Textiles material. Kitchen: Island pendants, Simon Pearce. Countertop and decorative slab backsplash, Victoria Falls. Great room: Fine art wood bowl, George Peterson. Side table, Rose Tarlow. Sofas, Lancaster Custom Crafted Upholstery. Custom coffee table, Making Whole. Covered outdoor area: Sofas, Palecek. Lounge chairs, Arhaus. Coffee table, Dovetail. Outdoor rug, Designer Carpets.

Pages 97–98: Family room/bar/kitchenette: Custom sofas and swivel recliner, Lee Industries. Barstools, Hooker Furniture. Custom bar chandelier, The Heirloom Companies. Guest bedroom: Custom draperies by NFDrapery, fabric in Cowtan & Tout. Rug, Designer Carpets. Rattan canopy bed and nightstands, Serena and Lily. Primary bedroom: Custom draperies by NFDrapery in Ellis Dunn fabric. Rug, Designer Carpet. Custom velvet sofa by PLATT Home. Inlay stool, Made Goods. Antique French doors, Jacqueline Adams Antiques, fitted by PLATT and Glennwood Custom Builders. Custom carved bed, McSwain's Handmade Furniture, Inc. Rear patio/pool: Outdoor lounge chairs, RH. Copper exterior lighting, Visual Comfort.

ARCHITECTURE JOURNAL

Page 99–101: Images provided by Clopay.

DESTINATIONS

Page 105: Maison de la Luz, New Orleans, Louisiana.

COLOR CRUSH

Page 113: See Directory of Companies for company contact information.

DIRECTORY OF COMPANIES

- Abigail Interiors: 912.663.7384
Ann Morris: annmorrislighting.com
Anne Bielowicz: 404.210.7874
Anne Irwin Fine Art: anneirwinfineart.com
Annie Selke: annieselke.com
Architectural Accents: architecturalaccents.com
Aria Stone Gallery: ariastonegallery.com
Arteriors: arteriorshome.com
Ashley Gilbreath Interior Design:
ashleygilbreath.com
Baker Furniture: bakerfurniture.com
Benjamin Moore: benjaminmoore.com
Bevolo: bevolo.com
Bliss Studio: blissstudio.com
BOBO Intriguing Objects:
bobointriguingobjects.com
Bonner Buchanan: bonnerbuchanan.com
Bradley: bradleyusa.com
Brunschwig & Fils: brunschwigandfils.com
Bryan Dumas: 404.583.5527
Burchette & Burchette: realhardwoodfloors.com
Caesarstone: caesarstoneus.com
Century Furniture: centuryfurniture.com
Chaddock: chaddockhome.com
Colefax and Fowler:
cowtan.com/Brand/colefax-and-fowler
Cowtan & Tout: cowtan.com
Currey & Co.: curreyandcompany.com
Custom Shades of London:
customshadesoflondon.com
Dan Christiansen: danchristiansen.com
David Iatesta: davidiatesta.com
Designer Carpets: designer-carpets.net
Designers Guild: designersguild.com
Duralee: robertallendesign.com
Edelman Leather: edelmanleather.com
Ellis Dunn: ellisdunn.com
Élitis: elitis.fr/en
Eloquence: eloquence.com
Estelle Colored Glass: estellecoloredglass.com
Fabricut: fabricut.com
Farrow & Ball: farrow-ball.com
Ferrick Mason: ferrickmason.com
Fibreworks: fibreworks.com
Fortuny: fortuny.com
Frank Thomas Gallery: frankthomasgallery.com
Franya Waide Antiques and Interiors:
404.352.2300
Furniture Classics: furnitureclassics.com
Garrett P. Nelson Studio:
garrettpnelsonstudio.com
Glennwood Custom Builders:
glennwoodcustombuildersnc.com
Global Views: globalviews.com
Gregorius Pineo: gregoriuspineo.com
Gucci: gucci.com
Harbour: shopharbour.com
Hartmann & Forbes: hartmannforbes.com
Hermès: hermes.com
Hickory Chair: hickorychair.com
Highland Court: robertallendesign.com
Highland House: highlandhousefurniture.com
Hodsoll McKenzie: zimmer-rohde.com
Holland MacRae: hollandmacrae.com
Holland & Sherry: hollandandsherry.com
Holly Hunt: hollyhunt.com
Hollywood at Home: hollywoodathome.com
House of Rohl: houseofrohl.com
Ida Manheim Antiques:
idamanheimantiques.com
Industry West: industrywest.com
Interlude: interludehome.com
Iron is King: ironisking.com
Jacqueline Adams Antiques:
jacquelineadamsantiques.com
Jacques's Antiques: 843.577.0104
JAMES Showroom: jamesshowroom.com
Jan Showers: janshowers.com
Janus et Cie: janusetcie.com
Jasper: michaelsmithinc.com/
jasper-showroom/fabrics
Jennifer Daly: jenndaly.com
Jere's Antiques: jeresantiques.com
Jerry Pair: jerrypair.com
Jill Biskin: jillbiskin.com
Jonathan Browning: jonathanbrowninginc.com
Josh Young: joshyoungdesignhouse.com
Julie Neill: julieneill.com
Kelly Wearstler: kwid.com
Kettlewell Collection: kettlewellcollection.com
Kingdom Woodworks:
kingdomwoodworks.com
Knight Residential Group: krgbuilds.com
Knoll: knoll.com
Kravet: kravet.com
L&F Construction: lfconstruction.com
Laura Naples: lauranaplesstudio.com
Lee Industries: leeindustries.com
Lee Jofa: kravet.com
Lee Smith Antiques & Design:
leesmithantiques.com
Lindsay Cowles: lindsaycowles.com
Linnea Glatt: linneaglatt.com
Lintot: lintotshop.com
Loloi: loloirugs.com
Loro Piana: loropiana.com
MacKenzie-Childs: mackenziechilds.com
Made Goods: madegoods.com
Maharam: maharam.com
Making Whole: makingwhole.com
Manuel Canovas: cowtan.com
Mark Silvers & Associates: 770.856.7784
Matthews & Parker: matthewsandparker.com
McGuire Furniture: mcguirefurniture.com
McSwain's Handmade Furniture, Inc.:
mcswains.com
Megan Lightell: meganlightell.com
MESA Design Group: mesadesigngroup.com
Michael Solomon: michaelsolemonart.com
Modern History: modernhistoryhome.com
Nickey Kehoe: nickeykehoe.com
Niermann Weeks: niermannweeks.com
Nobilis: nobilis.fr
Noir Furniture: noirtfurniturela.com
Norman Davenport Askins, Architect:
normanaskins.com
Oly: olystudio.com
Osborne & Little/Nina Campbell:
osborneandlittle.com/brand/nina-campbell
Palecek: palecek.com
Parish by Ashley Gilbreath:
parishbyashleygilbreath.com
Patterson Flynn: pattersonflynn.com
Paul Ferrante: paulferrante.com
Petricia Thompson Antiques: chairish.com/
shop/petriciathompsonantiques
Phillip Jeffries: phillipjeffries.com
Pierre Frey: pierrefrey.com
Pindler: pindler.com
PLATT: platt.us
PLATT Home: plathome.us
Pottery Barn: potterybarn.com
Premier Woodworks: 770.598.3715
Quintus: quintushome.com
R Hughes: r-hughes.com
Radish Moon: radishmoon.com
Ralph Lauren: ralphlaurenhome.com
Rejuvenation: rejuvenation.com
RH: rh.com
RH Teen: rhteen.rh.com
Robert Kime: robertkime.com
Rose Tarlow: rosetarlow.com
Samuel & Sons: samuelandsons.com
Sandra Jordan: sandrajordan.com
Scalamandré: scalamandre.com
Schoolhouse: schoolhouse.com
Schumacher: fschumacher.com
Serena & Lily: serenaandlily.com
Shelby Wagner Design:
shelbywagnerdesign.com
Sherwin-Williams: sherwin-williams.com
SHM Architects: shmarchitects.com
Simon Pearce: simonpearce.com
Southern Home Outdoor: southernhomeinc.com
Square Feathers: squarefeathers.com
Stanton Carpet: stantontcarpet.com
Stark: starkcarpet.com
Steve Penley: penleyartco.com
Steven Seinberg: stevenseinberg.com
Stroheim: fabricut.com
Studio MH: studio-mh.com
StudioMV: studiomvdesigns.com
Summer Classics: summerclassics.com
Sutherland Furniture: sutherlandfurniture.com
Suzanne Tucker Home:
suzannetuckerhome.com
Tatum Brown Custom Homes: tatumbrown.com
TCS Designs: 828.324.9944
Togar Rugs: togarrugs.com
Traci Zeller Interiors: tracizeller.com
The Heirloom Companies:
theheirloomcompanies.com
Theo: theodecor.com
Thibaut: thibautdesign.com
Tippett Sease Baker Architecture:
tsbarchitecture.com
Tom January Floors: tomjanuaryfloors.com
Travers: zimmer-rhode.com
Urban Electric: urbanelectric.com
Verellen: verellen.biz
Villa & House: vandh.com
Visual Comfort: visualcomfort.com
Waterworks: waterworks.com
West Fraser: westfraserstudio.com
William McClure: williammclure.com
Wool by Hand: Anthony Dominy,
404.308.0644
Worlds Away: worlds-away.com
Zentique: zentique.com