



JANUS et Cie®

## CLIENT INSTALLATIONS

# SMALL SPACES



JANUS et Cie®



## THE WESTIN EXCELSIOR, ROME, ITALY

---

### PRODUCTS SHOWN

AMALFI ADJUSTABLE CHAIN BACK LOUNGE CHAIR, AMALFI ARMCHAIR, AMALFI CHAISE LOUNGE WITH ARMS, AMALFI DAYBED, AMALFI DEEP TUXEDO SOFA 3 SEAT, AMALFI GLASS TOP DINING TABLE RECTANGLE 183, AMALFI GLASS TOP HOURGLASS SIDE TABLE 33, AMALFI SIDE CHAIR, AMALFI STAR GLASS TOP COCKTAIL TABLE SQUARE 107, AMALFI STONE TOP HOURGLASS SIDE TABLE 33, AZIMUTH CROSS ARMCHAIR, AZIMUTH CROSS LOUNGE CHAIR, AZIMUTH CROSS SIDE TABLE SQUARE 61, BOX PLANTER SMALL, CHAMFERED PLANTER EXTRA LARGE, CHRYSANTHEMUM SIDE TABLE ROUND 48, DITTO SIDE TABLE 41, MORELLO MEDIUM, MORELLO PETITE, AND STRADA DINING TABLE OVAL 260

---

### COLLECTIONS SHOWN

AMALFI, AZIMUTH, CHRYSANTHEMUM, DITTO, JANUSSTONE PLANTERS, MORELLO, AND STRADA



JANUS et Cie®



## CAMPBELL GRAY AMMAN, JORDAN

DESIGNED BY MARTIN BRUDNIZKI

---

### PRODUCTS SHOWN

ARBOR DINING TABLE ROUND 130, ARBOR DINING TABLE SQUARE 112, ASTI, JANUS TEAK UMBRELLA ROUND 250, MISTRA CHAISE LOUNGE, MISTRA OTTOMAN / TABLE 45, PARADISO, RELAIS CHAISE LOUNGE, AND RELAIS SIDE CHAIR

---

### COLLECTIONS SHOWN

ARBOR, JANUS UMBRELLAS, MISTRA, RELAIS, AND TEXTILES



JANUS et Cie®



## PRIVATE RESIDENCE, FORT LAUDERDALE, FL

DESIGNED BY FISHER GREY STUDIO  
PHOTOGRAPHED BY GREGG KRANTZ

---

PRODUCTS SHOWN  
NEXUS ARMCHAIR

---

COLLECTIONS SHOWN  
NEXUS





J A N U S   e t   C i e®



## THE PHOENICIAN, SCOTTSDALE, AZ

PHOTOGRAPHED BY MARK BOISCLAIR & MARK SILVERSTEIN  
COURTESY OF HOST HOTELS & RESORTS

---

### PRODUCTS SHOWN

DUO COCKTAIL TABLE RECTANGLE 127, DUO DINING TABLE SQUARE 101, DUO MESH ARMCHAIR, DUO MESH CHAISE LOUNGE, DUO MESH SIDE CHAIR, DUO SIDE TABLE ROUND 53, KOKO II C-TABLE 41, MATISSE MODULE 2 SEAT LEFT, MATISSE MODULE 2 SEAT RIGHT, MATISSE MODULE CENTER, MATISSE MODULE CORNER, MATISSE SOFA 2 SEAT, VINO COCKTAIL TABLE/OTTOMAN ROUND 88, AND VINO LOUNGE CHAIR

---

### COLLECTIONS SHOWN

DUO, KOKO II, MATISSE, AND VINO



JANUS et Cie®



## PRIVATE RESIDENCE, SINGAPORE

DESIGNED BY PRESTIGE GLOBAL

---

### PRODUCTS SHOWN

ASTI, KNOT LOUNGE CHAIR, KNOT SIDE TABLE ROUND 39, NEXUS SOFA 2 SEAT, SPINNAKER, AND ZIP

---

### COLLECTIONS SHOWN

KNOT, NEXUS, AND TEXTILES





JANUS et Cie®



## PRIVATE RESIDENCE, SINGAPORE

DESIGNED BY PRESTIGE GLOBAL

---

### PRODUCTS SHOWN

ASTI, KNOT LOUNGE CHAIR, KNOT SIDE TABLE ROUND 39, NEXUS SOFA 2 SEAT, SPINNAKER, AND ZIP

---

### COLLECTIONS SHOWN

KNOT, NEXUS, AND TEXTILES



JANUS et Cie®



## PORT D'HIVER BED AND BREAKFAST, MELBOURNE BEACH, FL

PHOTOGRAPHED BY JUMPING ROCKS PHOTOGRAPHY  
COURTESY OF PORT D'HIVER BED AND BREAKFAST

---

### PRODUCTS SHOWN

AMARI ARMCHAIR, AMARI FULLY WOVEN DINING TABLE SQUARE 90, AMARI GLASS TOP SIDE TABLE SQUARE 45, AMARI LOW BACK LOUNGE CHAIR, AMARI OTTOMAN, QUINTA FULLY WOVEN CHAISE LOUNGE, AND QUINTA TEAK / WOVEN ROCKING CHAIR

---

### COLLECTIONS SHOWN

AMARI AND QUINTA





J A N U S   e t   C i e®



## PORT D'HIVER BED AND BREAKFAST, MELBOURNE BEACH, FL

PHOTOGRAPHED BY JUMPING ROCKS PHOTOGRAPHY  
COURTESY OF PORT D'HIVER BED AND BREAKFAST

---

### PRODUCTS SHOWN

AMARI ARMCHAIR, AMARI FULLY WOVEN DINING TABLE SQUARE 90, AMARI GLASS TOP SIDE TABLE SQUARE 45, AMARI LOW BACK LOUNGE CHAIR, AMARI OTTOMAN, QUINTA FULLY WOVEN CHAISE LOUNGE, AND QUINTA TEAK / WOVEN ROCKING CHAIR

---

### COLLECTIONS SHOWN

AMARI AND QUINTA



J A N U S   e t   C i e®



## PORT D'HIVER BED AND BREAKFAST, MELBOURNE BEACH, FL

PHOTOGRAPHED BY JUMPING ROCKS PHOTOGRAPHY  
COURTESY OF PORT D'HIVER BED AND BREAKFAST

---

### PRODUCTS SHOWN

AMARI ARMCHAIR, AMARI FULLY WOVEN DINING TABLE SQUARE 90, AMARI GLASS TOP SIDE TABLE SQUARE 45, AMARI LOW BACK LOUNGE CHAIR, AMARI OTTOMAN, QUINTA FULLY WOVEN CHAISE LOUNGE, AND QUINTA TEAK / WOVEN ROCKING CHAIR

---

### COLLECTIONS SHOWN

AMARI AND QUINTA



J A N U S e t C i e®



## PORT D'HIVER BED AND BREAKFAST, MELBOURNE BEACH, FL

PHOTOGRAPHED BY JUMPING ROCKS PHOTOGRAPHY  
COURTESY OF PORT D'HIVER BED AND BREAKFAST

---

### PRODUCTS SHOWN

AMARI ARMCHAIR, AMARI FULLY WOVEN DINING TABLE SQUARE 90, AMARI GLASS TOP SIDE TABLE SQUARE 45, AMARI LOW BACK LOUNGE CHAIR, AMARI OTTOMAN, QUINTA FULLY WOVEN CHAISE LOUNGE, AND QUINTA TEAK / WOVEN ROCKING CHAIR

---

### COLLECTIONS SHOWN

AMARI AND QUINTA





JANUS et Cie®



## PRIVATE RESIDENCE, MADISON, CT

DESIGNED BY HERNDON DESIGN

---

### PRODUCTS SHOWN

KNOT MODULE 2 SEAT LEFT, KNOT MODULE CENTER, KNOT MODULE CORNER, AND DRIFT

---

### COLLECTIONS SHOWN

KNOT AND TEXTILES



J A N U S   e t   C i e®



## DOUBLETREE BY HILTON HOTEL TALLAHASSEE, FL

DESIGNED BY COMMERCIAL DESIGN SERVICES

---

### PRODUCTS SHOWN

JANUSCAFÉ TEAK TOP RECTANGLE 42X30, VINO LOUNGE CHAIR, AND AUBREE

---

### COLLECTIONS SHOWN

JANUSCAFÉ, TEXTILES, AND VINO



JANUS et Cie®



PRIVATE RESIDENCE, SYDNEY, AUSTRALIA

---

PRODUCTS SHOWN

NEXUS LOUNGE CHAIR AND NEXUS SOFA 2 SEAT

---

COLLECTIONS SHOWN

NEXUS





JANUS et Cie®



## PRIVATE RESIDENCE, SYDNEY, AUSTRALIA

---

PRODUCTS SHOWN

NEXUS LOUNGE CHAIR AND NEXUS SOFA 2 SEAT

---

COLLECTIONS SHOWN

NEXUS



J A N U S   e t   C i e®



## PRIVATE RESIDENCE, DALLAS, TX

DESIGNED BY AND COURTESY OF PULP DESIGN STUDIOS

---

PRODUCTS SHOWN

AMARI LOW BACK LOUNGE CHAIR AND CAPSULE SIDE TABLE ROUND 46

---

COLLECTIONS SHOWN

AMARI AND CAPSULE





JANUS et Cie®



## PRIVATE RESIDENCE, RALEIGH, NC

DESIGNED BY CAROLYNLEONA

PHOTOGRAPHED BY DUSTIN PECK PHOTOGRAPHY

---

### PRODUCTS SHOWN

AMARI HIGH BACK LOUNGE CHAIR, BON VIVANT LONG POUF, DRUM STOOL / SIDE TABLE 36, KNOT LOUNGE CHAIR, AUBREE, DRIFT, AND

REMARKABLE

---

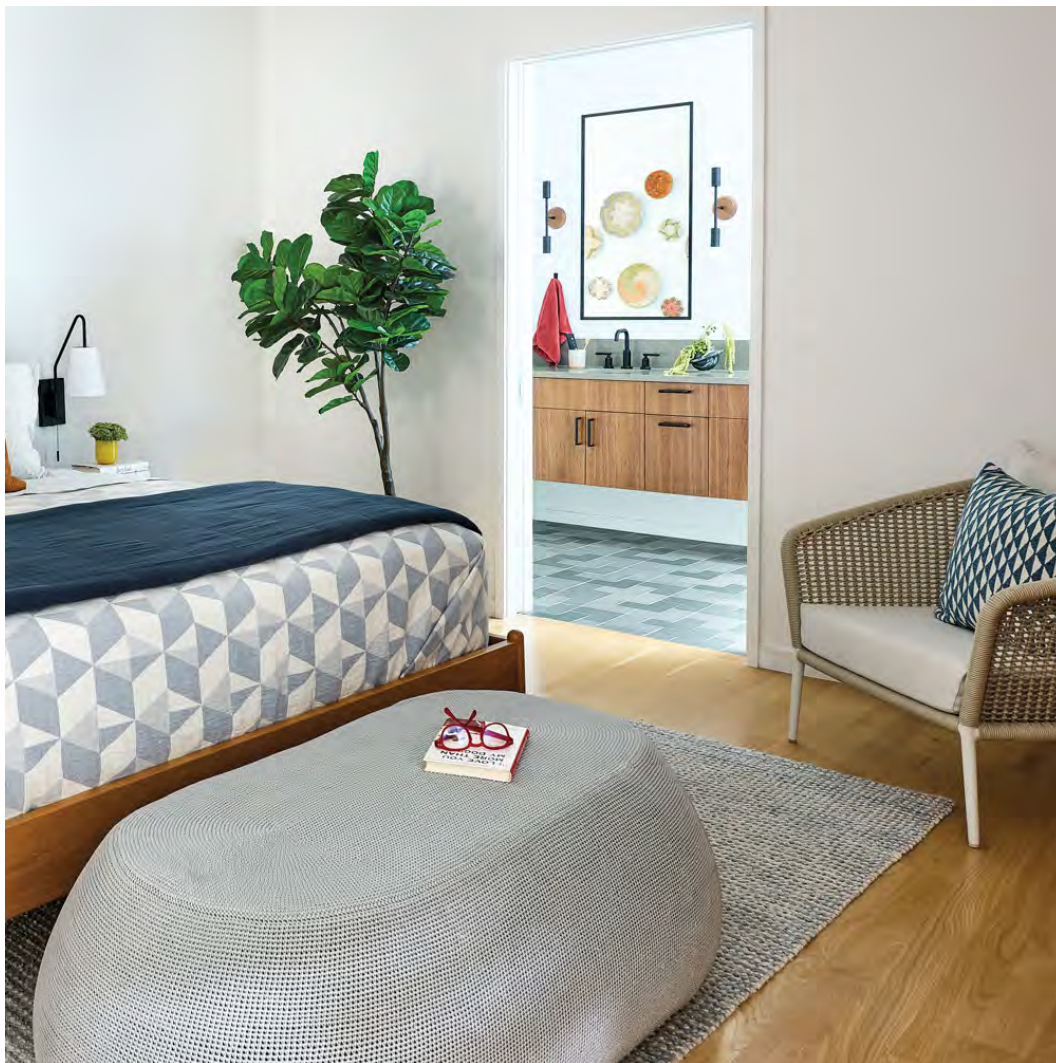
### COLLECTIONS SHOWN

AMARI, BON VIVANT, DRUM, KNOT, AND TEXTILES





JANUS et Cie®



## PRIVATE RESIDENCE, RALEIGH, NC

DESIGNED BY CAROLYNLEONA  
PHOTOGRAPHED BY DUSTIN PECK PHOTOGRAPHY

---

### PRODUCTS SHOWN

AMARI HIGH BACK LOUNGE CHAIR, BON VIVANT LONG POUF, DRUM STOOL / SIDE TABLE 36, KNOT LOUNGE CHAIR, AUBREE, DRIFT, AND

REMARKABLE

---

### COLLECTIONS SHOWN

AMARI, BON VIVANT, DRUM, KNOT, AND TEXTILES