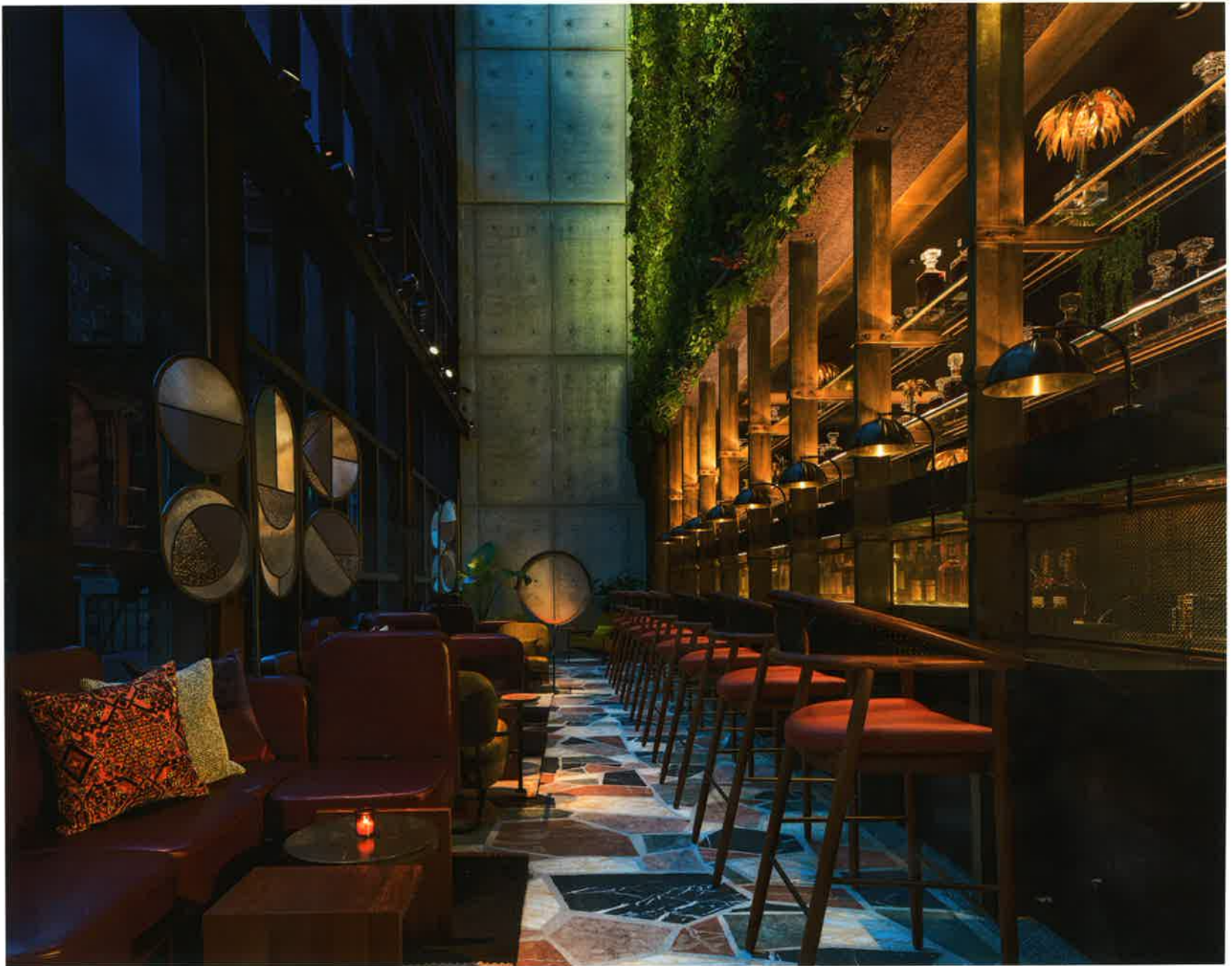


# SLEEPER

GLOBAL HOTEL DESIGN

MARCH | APRIL 2019



## Moxy Chelsea

Moxy Hotels takes root in New York's blossoming flower district

## AHEAD Global

The Awards for Hospitality Experience and Design crowns its ultimate winners

## Kuala Lumpur

Malaysia's capital emerges from the shadows with a slate of luxury openings

**UHS**  
Mill

Developed in collaboration with exterior decking firm Millboard, the Mill collection from UHS combines faux grained wood planks with a range of natural finishes including Nature, Carbon, Mumbai and Ocean. Taking inspiration from the colours of India, as well as weathered, charred and oak timbers, the range is easy to clean and stain resistant thanks to the use of non-porous materials.

[www.uhs-group.com](http://www.uhs-group.com)



**RH**  
Sebastian

Paying homage to mid-century Scandinavian design, RH's Sebastian collection is generously proportioned and built from sustainably harvested teak. Designed by Barcelona-based Mario Ruiz, the series comprises comfortably raked lounge and dining elements, including a sofa, armchair and side chair as well as a chaise longue and several tables, the former flanked by gently sloped and sculpted arms in a juxtaposition of angles and curves.

[www.restorationhardware.com](http://www.restorationhardware.com)

**JANUS ET CIE**  
Gina

Janus et Cie has introduced Gina, its first collection with designer Piero Lissoni. The 18-piece series comprises a range of modular lounge chairs, which combine solid aluminium frames and woven rope seats that are soft to the touch, in addition to oversized cushions and toss pillows that create opportunities for personalised styling. Completing the range is a chaise longue with an integrated surface for condiments, as well as an array of side chairs, armchairs and teak dining tables.

[www.janusetcie.com](http://www.janusetcie.com)

