

show daily

merchandise mart – monday, june 13, 2016

the a-list

when: 9:30AM–5:30PM
who: Safco Products
what: 50th Anniversary City of Hope donation
where: space 331

when: 10:00AM
who: Momentum Group
what: Shantell Martin live art performance
where: space 11-106

when: 3:30PM
who: J+J Flooring Group
what: Reception
where: space 10-118

when: 3:30–6:30PM
who: Mayer Fabrics + Sunbrella
what: Whirligig cocktail party
where: space 1173

when: 4:00–5:30PM
who: Okamura
what: Cocktails
where: space 11-124

when: 4:00–6:00PM
who: 3form
what: Color + Cocktails
where: space 10-142

when: 4:00–6:00PM
who: Davis Furniture
what: Cocktails
where: space 3-115

when: 4:00–6:00PM
who: Luna Textiles
what: Martinis
where: space 10-106

when: 4:00–6:00PM
who: OFS Brands
what: Cocktails
where: space 1132

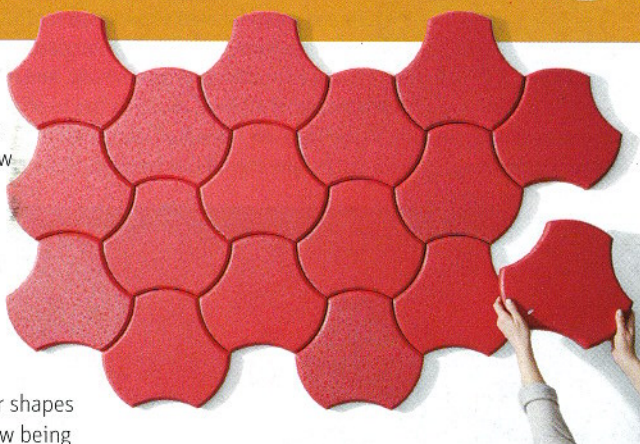
when: 4:00–7:00PM
who: Arcadia + Encore
what: Cocktails
where: spaces 340 and 336

when: 4:00–8:00PM
who: Andreu World
what: Celebrating 60 years
where: space 10-132

when: 4:30–6:30PM
who: Global Furniture Group
what: 50th anniversary celebration
where: space 1035

when: 4:30–6:30PM
who: Wolf-Gordon / Vescom
what: Cocktail party with Mae Engelgeer
where: space 10-161

Earlier this year, **Carnegie** turned heads with the launch of a new product category, a line of easy-to-install acoustic panels called **Xorel Artform**. Constructed of the brand's proprietary PVC-free sustainable textile, the product—offered in four shapes and myriad hues—is now being offered in nine new panel patterns boasting embossed or embroidered textures. Hear that? It's the buzz of excitement. **space 10-112**



sounding off

Interior Design editor in chief Cindy Allen will be live-streaming conversations with top talents at the show's first ever sound booth—using Xorel Artform—dubbed Interior Design Live at NeoCon.
where: The new Mart Grand Stairs, off the South Lobby. **when:** Monday and Tuesday from 12:00–1:30PM.

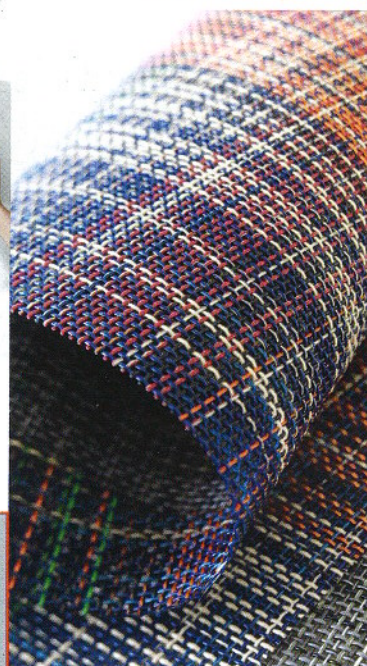


workin' it

In search of function-forward desking? Look no further than **Workshelf**, the latest from **Three H Furniture**. Combining streamlined benching with the best attributes of a panel system, the components work equally well in private offices and shared spaces. Connectivity features include industrial designer Jean Bourassa's proprietary Powershelf steel support structure, which routes power and data directly to users. Smoked plexiglass dividers ensure a pinch of privacy, while closed cabinetry and cantilevered shelving provide plentiful storage. But it is Mark Muller's leg design that really turns heads: Crafted of stained solid wood or powder-coated aluminum, they give the organically shaped desktop more, er, leg to stand on. **space 345**



mad for plaid



A pattern with old-school cred, **Plaid** gets a contemporary update courtesy of **Chilewich**. The 36-inch design is available as both wall-to-wall flooring and wall textiles in 6-foot rolls, 18-inch tiles, and 6-by-36-inch planks. Matching the seams is not necessary, as misalignment becomes part of the unique installation design. Woven from TerraStrand, a proprietary material made from vegetable compounds, Plaid interweaves 14 hues in solid and bi-color yarns. The design is available in three colorways: tan, multi, and gray. **space 7-6030**



Add some sunshine with Lievore Altherr Molina's stackable **Catifa 46** chair for **Arper**, now in an updated palette; mix or match the legs, shell, and upholstery colors for added pop! **space 339**

lighting the way

New from **Herman Miller**, the simple spun-steel **Ode** lamp offers an unobtrusive design, emanating a mesmerizing pool of diffused light from soft, anti-glare LEDs. The design's real beauty, though, is its function. The freestanding and surface-integrated versions operate via touch technology: A quick grasp offers easy on/off control. And the table lamp model is dimmable, perfect for conjuring a relaxing, moody glow at the end of the workday. **space 321**

SELECT

Where can you see design that's on point? At the Interior Design SELECT partner showrooms, of course. For the list of locations, see page 90. #IDneocon



Garrett Leather 7-7054



Global Furniture Group 1035



HBF Textiles 387



Humanscale 351



Interface 10-136



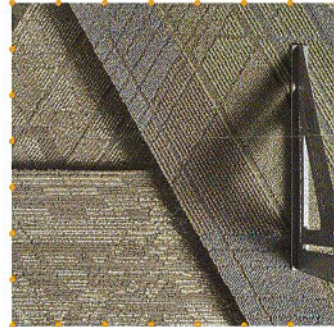
J+J Flooring Group 10-118



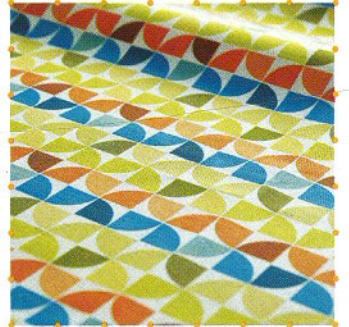
JANUS et Cie 3-107 & 1420



Keilhauer 373



Mannington Commercial 1039



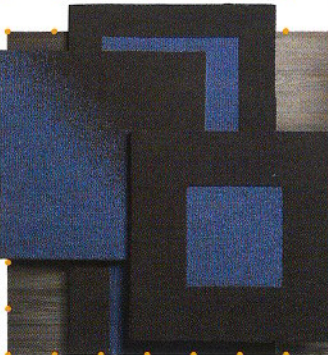
Mayer Fabrics 1173



MechoSystems 7-1023



Metroflor Corporation 7-8116



Mohawk Group 377



Momentum Group 11-106



OFS Brands 1132



Okamura 11-124



Sandler Seating 1099



Sunbrella 7-6042



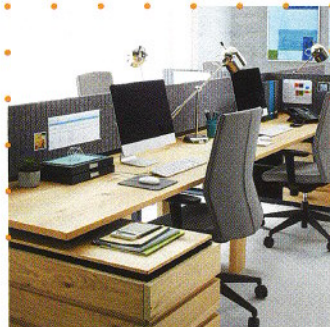
Tarkett 3-391 & 7-6130



Teknion 1048



Versteel 1093



West Elm Workspace with Inscape 1191



Wolf-Gordon 10-161