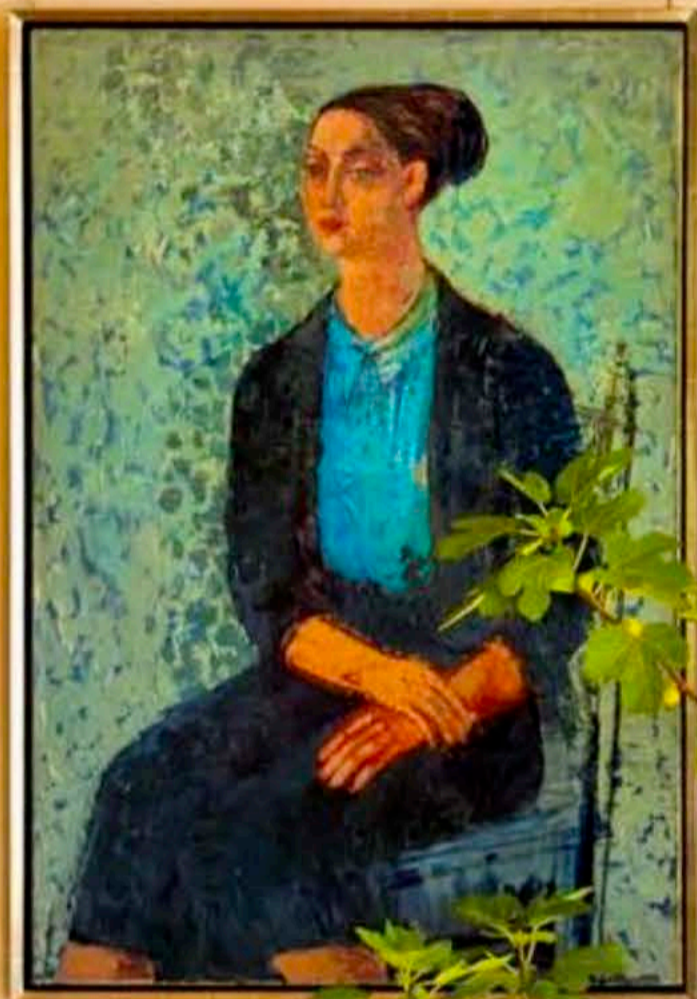


Galerie

Live Artfully



**Painter David Salle
Looks Back & Forward**

**Dream Destinations
We Can't Wait to Visit**

**Gorgeous Homes
in the Hamptons,
Maine, and Beyond**

SUMMER 2020
ISSUE N° 18

ARTFUL ESCAPES



From top: For the upper deck of this Sanlorenzo megayacht, designer Patricia Urquiola created a serene sitting area using Janus et Cie Anatra sofas, a Caule lamp from Flos, and Kettal Mesh deck beds; the wood stool and cocktail table are custom. A Sanlorenzo SD96 yacht made in Viareggio, Italy. Designer Patricia Urquiola.



Smooth Sailing

For the interior of her first yacht, Patricia Urquiola combines her unique aesthetic with the soothing palette of the sea



“I’ve always been close to the sea,” says designer Patricia Urquiola of the transportive interior she conceived blending custom furnishings made from ribbed glass, oak veneer, and Silk Georgette stone. Yet this space isn’t tucked inside one of the Milan-based architect’s masterful structures, like the Lake Como resort Villa Pliniana or Il Sereno. Instead, this five-bedroom, five-and-a-half bath residence literally floats on the water, ensconced within a bespoke Sanlorenzo SD96 superyacht.

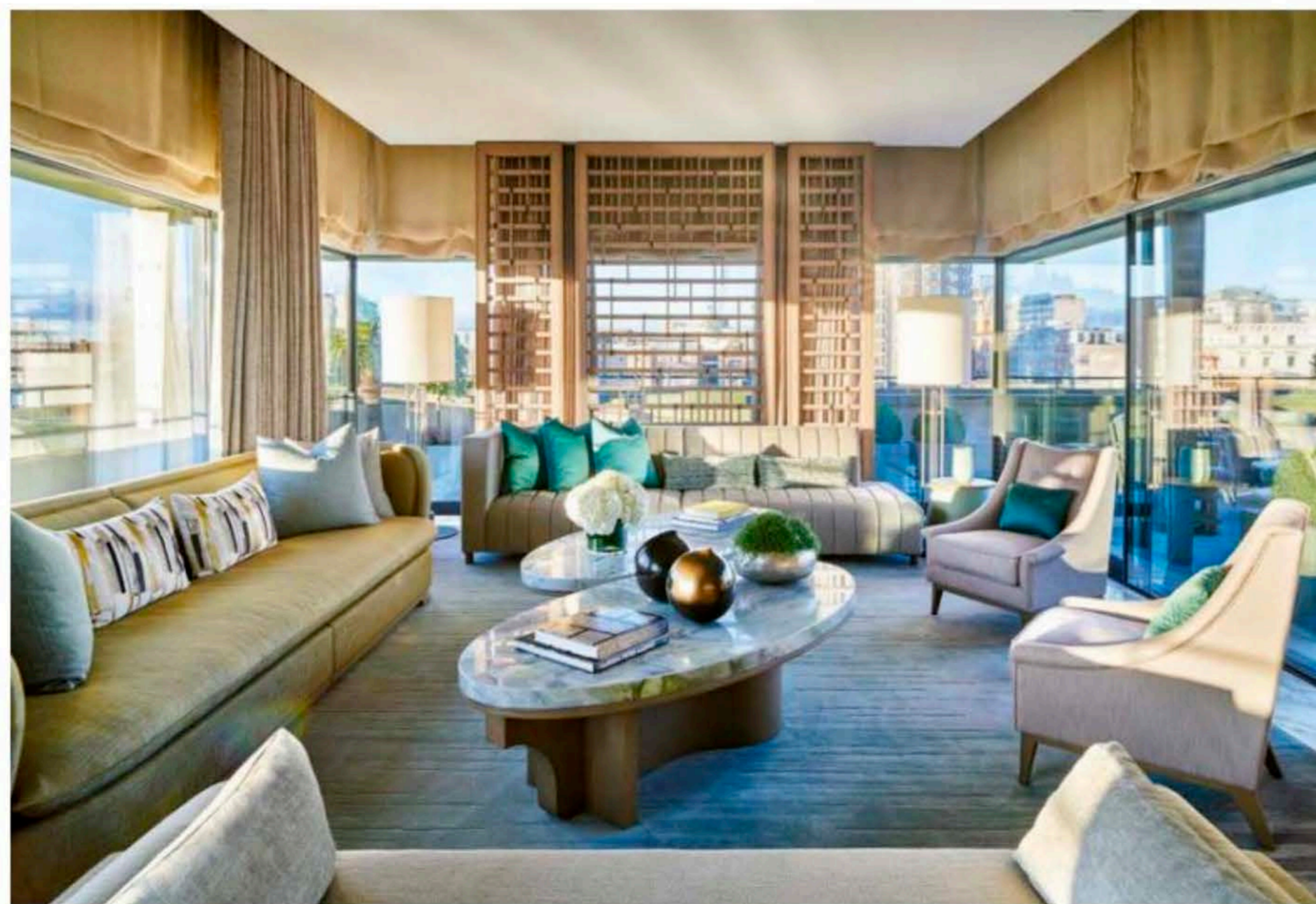
Born in the coastal city of Oviedo, Spain, Urquiola wanted her first yacht design to accentuate indoor-outdoor living. As such, the rounded-edge herringbone flooring she crafted for Listone Giordano is rendered in oak inside, then continued in teak on the exterior decks. Furniture was constructed to provide open sight lines out the expansive picture windows, offering crystal-clear views of placid waterways and dreamy port cities like Monaco, the French Riviera, and Sardinia’s Emerald Coast. Adding to the air of endless space, free-flowing rooms were specifically built with tucked-away amenities that readily convert a salon into a dining room or a cozy cinema, a lounge into a guest cabin with private bath. “I was immediately struck by the client’s desire to look for a new way to design a boat with the same attention and customization with which a house is designed,” says Urquiola.

FROM TOP: ALBERTO STRADA (2); MARCO CRAIG. OPPOSITE: ALBERTO STRADA

André Fu

When the Hong Kong native's first hotel project, the Upper House, came to him, he had no previous hospitality experience, but he overcame the many design obstacles to create what has become an iconic property in his hometown. This fall brings the opening of Hotel the Mitsui Kyoto in Japan, which features a wooden pavilion in the lobby that's reminiscent of the city's bamboo thickets and luxuriously Zen rooms with design elements like sliding shoji-style paneled doors—a nod to traditional Japanese tearooms. But one of André Fu's favorite elements might come as a surprise: "I personally think it's wonderful to have a minibar in a master bedroom, in case you want to have a drink or make a cup of tea before heading off to bed," he reveals. At Mitsui, Fu created a cabinet with a pullout refrigerated drawer and another with snacks, glassware, and Japanese ceramic mugs. He brought a similarly deft touch to a pair of suites at London's Berkeley hotel.

Fu says he's most proud of his work on the St. Regis Hong Kong, which was inspired by the look of that city in the '60s and '70s and designed to be a "curated mansion." The hotel is adorned with pieces from his Rock Garden collection of outdoor furniture for Janus et Cie on the Astor Terrace, accessed through a monolithic moon gate and planted with both bamboo and topiaries, which Fu used to subtly "embrace the spirit of the city." *afso.net*



Clockwise from top: André Fu inside his model apartment at 53 West 53 in Manhattan. The designer's Rock Garden lounge chair for Janus et Cie. The Crescent Pavilion at the Berkeley in London.



Items pictured but not mentioned are from private collections. (T) means item is available only to the trade.

All of the following images are © Artists Rights Society (ARS). **Pages 10, 87:** 2020 Calder Foundation, New York/ARS, New York. **Pages 13, 104–09:** 2020 The Isamu Noguchi Foundation and Garden Museum, New York/ARS, New York. **Pages 14, 61, 72–75, 78:** 2020 David Salle/VAGA at ARS, NY. Courtesy of Skarstedt, NY. **Pages 30, 40:** Anish Kapoor. All Rights Reserved, DACS, London/ARS, NY 2020. **Page 39:** 2020 ARS, New York/VG Bild-Kunst, Bonn. **Page 48:** 2020 Georgia O’Keeffe Museum/ARS, New York. **Page 65, 68, 69:** 2020 Frank Stella/ARS, New York. **Pages 78, 82:** 2020 ARS, New York/ADAGP, Paris. **Page 89:** 2020 Pollock-Krasner Foundation/ARS, New York. **Page 92:** 2020 ARS, New York/ADAGP, Paris. **Page 97, 103:** 2020 George Condo/ARS, New York.

SMOOTH SAILING

Pages 46–47: Yacht by Sanlorenzo; sanlorenzoyacht.com. **Interior design and select furnishings** by Patricia Urquiola; patriciaurquiola.com. **Page 46:** On upper deck, **Anatra sofas** by Janus et Cie; janusetcie.com. **Caule lamp** from Flos; flos.com. **Mesh deck beds** by Kettal; kettal.com. **Cestita lamp** by Miguel Milá; santacole.com. **Page 47:** In salon, **Beam sofa** and **Table à Plateau Interchangeable** by Cassina; cassina.com. **Burin Mini table** by Viccarbe; viccarbe.com. In bedroom, **Indochine armchair** by Cassina. **Nuances ottoman** by Gan; gan-rugs.com.

OPEN INVITATION

Pages 62–71: Architecture by Randy Correll of Robert A.M. Stern Architects; ramsa.com. **Interior design** by Dara Stern. **Landscape**

design by Justin Terzi; justinterzidesign.com. **Pages 62–63:** On terrace, **chairs** by RH; rh.com. **Lanterns** by Circa Lighting; circalighting.com. **Planters** from *Broadview Gardens East Hampton*; broadviewgardenseh.com. **Planters custom finished** by Carrie Swim; carrieswim.com. **Kuba cloth runner** from *Hemingway African Gallery*; hemingwayafricangallery.com. **Brazil hurricanes** and **faux-shagreen tray** by Mecox; mecox.com. **Hitoshi Kato facet vase** from *Roman and Williams Guild*; rwguild.com. **Page 65:** In dining room, **light fixture** by Fortuny; fortunyc.com. **Wall paint** by *Prelude Painting*; preludepainting.com. **Custom table** by *Classic Cabinets*; classiccabinetsandinteriors.com. **Custom chairs** by *Luther Quintana Upholstery, Inc.* (T); lqupholstery.com. **Suede chair fabric** and **cowhide rug** by *Dualoy*; dualoy.com. **Ted Muehling candlesticks** from *E.R. Butler & Co.*; erbutler.com. **Alfredo vase** by *Georg Jensen*; georgjensen.com. **Naoya Arakawa highball** and **St. Louis crystal water goblet** from *Roman and Williams Guild*. **Pages 66–67:** In library, **wall paint** by *Prelude Painting*. **Lamp** by *Mecox*. **Side table** by *Matthews & Parker* (T); matthewsandparker.com. Sofa upholstered in **fabric** by *Rogers & Goffigon* (T); rogersandgoffigon.com. **Vedran Jakšić bowl** and **Warner Walcott vase** from *Roman and Williams Guild*. **Carl Harry Stalhane vase** from *Lost City Arts*; lostcityarts.com. **Page 68:** In master bedroom, **basket** and **side table** by *Mecox*. **Lineasette porcelain vase** from *Lost City Arts*. Custom Luther Quintana chair upholstered in **fabric** by *Holly Hunt*; hollyhunt.com. **Rug** by *Stark* (T); starkcarpet.com. In master bath, **candlestick sconces**

by *RH*. **Shades** by *Manhattan Shade & Associates*; manhattanshade.com. **Wall paint** by *Prelude Painting*. **Henry tub fittings**, **Margaux tub**, **Opus sink fittings**, and **Crystal vanity** by *Waterworks*; waterworks.com. **Stool** by *Made Goods* (T); madegoods.com. **White vase** from *Mecox*. **Hitoshi Kato vases** from *Roman and Williams Guild*. **Page 69:** In living room, **wall paint** by *Prelude Painting*. Luther Quintana curtains, pillows, sofa, ottoman in **fabric** by *Holly Hunt*. **Custom rug** by *Beauvais Carpets* (T); beauvaiscarpets.com.

ARTFUL DIPLOMACY

Pages 76–83: **Interior design and select furnishings** by *Gert Voorjans*; gertvoorjans.com. **Page 79:** In dining room, **wall covering** by *Jim Thompson Fabrics*; jimthompsonfabrics.com. **Griffe Montnapoleone glassware** by *Vetriere di Empoli*; vetreriediempoli.it. **Pages 80–81:** In salon, **silk wall covering** by *Tassinari & Chatel*; lielievreparis.com. **Page 83:** In master bath, **Arabescato marble**, **tub**, and **tub fittings** by *Lefroy Brooks*; lefroybrooks.com.

PLAYING WITH THE PAST

Pages 96–103: **Interior design and select furnishings** by *Bryan Graybill*; graybillddb.com. **Architecture** by *Historical Concepts*; historicalconcepts.com. **Landscape design** by *Hooten Land Design*; hootenlanddesign.com. **Page 96:** In drawing room, **ceiling paint** by *Fine Paints of Europe*; finepaintsofeurope.com. **Piano** by *Steinway & Sons*; steinway.com. **Vintage rug** from *Esmaili Rugs*; esmailirugs.com. **Banquette** upholstered in **mohair** by *Rogers & Goffigon* (T); rogersandgoffigon

.com. **Sconces** by *Michael Anastassiades*; michaelanastassiades.com. **Windows** by *Millwork Artisans*; millworkartisans.com. **Page 97:** In entry hall, **ceiling** and **wall paint** by *Farrow & Ball*; farrow-ball.com. **Pendant** by *Charles Edwards Lighting*; charlesedwards.com. Bench upholstered in **wool** by *Maharam* (T); maharam.com. **Fireplace** and **surround** by *Jamb*; jamb.uk.co. **Josef Hoffmann lamp** from *Woka Lamps Vienna*; woka.com. **Rug** by *Michael Del Piero*; michaeldepiero.com. **Pages 98–99:** In living room, **pendants** by *Roman and Williams Guild*; rwguild.com. **Bust** from *Beall & Bell*; beallandbell.com. **Fireplace** by *Jamb*. Sofa upholstered in **linen** by *de Le Cuona*; delecuona.com. Vintage Osvaldo Borsani chair upholstered in **fabric** by *Fortuny*; fortunyc.com. **Page 100:** In parlor, **wall** and **ceiling paint** by *Fine Paints of Europe*. Sectional upholstered in **fabric** by *Rosemary Hallgarten*; thomaslavin.com. **Page 101:** In kitchen, **refrigerator** by *Sub-Zero*; subzero-wolf.com. **Range** by *Lacanche*; lacanche.com. **Sink fittings** by *Waterworks*; waterworks.com. **Stool** by *Garde*; gardeshop.com. **Page 102:** In master bedroom, **sheets** and **cashmere blanket** by *Sferra*; sferra.com. **Pillows** and **curtains** by *de Le Cuona*. **Coverlet** by *Hollywood at Home*; hollywoodathome.com. **Chandelier** by *Fortuny*. **Page 103:** In master bath, **sconces** from *Woka Lamps Vienna*. **Tub fittings** by *Waterworks*. **Stool** by *Garde*. **Tub** by *Catchpole & Rye*; catchpoleandrye.com. **Flooring** by *ABC Stone*; abcworldwidestone.com.

MAINE ATTRACTION

Pages 104–09: **Architecture** by *Isamu Noguchi* and *Wallace K. Harrison*. **Restoration** by *Dan McGraw* of *Atlantic Engineering*; 207-667-3013.

GALERIE (ISSN 2470-9964), Volume 5, Issue 2, is published quarterly by Galerie Media Group LLC, 101 Park Avenue, 4th Floor, New York, NY 10178 USA. Lisa Fayne Cohen, Founder/Editorial Director; James S. Cohen, Chairman; Adam I. Sandow, Chairman, SANDOW. **Principal office:** Galerie Media Group LLC, 101 Park Avenue, 4th Floor, New York, NY 10178. **Editorial and advertising offices:** GALERIE, 101 Park Avenue, 4th Floor, New York, NY 10178.

Subscriptions: Visit galeriemagazine.com, or call 818-487-2019 (in the U.S.) or 855-664-4228 (toll-free, outside the U.S.).

Subscription prices: United States, \$39.95 for one year (outside the U.S., add \$40); \$12.95 per single copy. For customer service and changes of address, write to GALERIE Magazine, Attn: Customer Service Department, P.O. Box 16076, North Hollywood, CA 91615-6076. Allow 4–6 weeks to receive first copy.

Editorial inquiries: Write to GALERIE, 101 Park Avenue, 4th Floor, New York, NY 10178, or to editor@galeriemagazine.com.

GALERIE is not responsible for unsolicited manuscripts or art, and such material will not be returned.

Publisher assumes no responsibility for the claims made by advertisers or the merits of their respective products and offerings.

Reprints and permissions: No part of GALERIE may be reproduced or transmitted in any form or by any means, electronic or mechanical, without the express written permission of the publisher.

GALERIE is a registered trademark of Galerie Media Group LLC. All rights reserved. GALERIE © 2020.