

Innovation Happens Here

Inside Great Small Offices

NeoCon 2013 Preview

Rattan in the Round

Gabellini and Sheppard craft the Fibonacci Collection for JANUS et Cie



Michael Gabellini and Kimberly Sheppard, founders of New York-based Gabellini Sheppard Associates, an architecture firm known for its interiors for high-end fashion labels and museums, have designed their first furniture collection for JANUS et Cie. The Fibonacci Collection comprises a mix of natural and manmade materials and celebrates the curve.

Six seating options, made of hand-woven rattan and polished stainless steel, accommodate all forms of repose. The **Ava lounge chair** (3) and a dining version cradle the sitter in a one-piece, wafer-shaped seat. The unusual, eye-catching **Anda lounge chair** (1) features wingtips that cover the front legs and extend toward the ground. Circular in form, the **Alba lounge chair** (2) hovers atop a three-legged frame. Other lounges in the collection include the asymmetrical Avanda Recliner, which stretches 74.5 inches wide and has a sloping, high curved back, and the Vantana chaise, which

comfortably seats two. Many of the Fibonacci Collection pieces are also available for exterior use in versions made with JANUSfiber, which closely resembles the hand-woven rattan, and powder-coated galvanized steel frames.

Supplementing the collection are two tables, the Fondo and the Landa. The Fondo dining table has a circular glass top that rests on a white conical base formed from stacked bands of glass-reinforced concrete. The Fondo is also available as a side table. Providing a contrast to the curved forms, the collection's singular rectilinear offering is the Landa dining table, which features a rectangular top resting on a geometric, open base made of polished stainless steel. View the collection during NeoCon® in space 3-107. —MURRYE BERNARD

janusetcie.com

Reader Service No. 220

Seating

Designers share their favorite new chairs and benches

Diane S. Taft, Assoc. AIA, IIDA, ASID



Managing Principal
De Space Designs
Washington, D.C.

Bernhardt: CP Chair by Charles Pollock

bernhardtdesign.com
Reader Service No. 210



"This armless leather lounger, with a back formed from an unbroken line, is my new classic lounger. It is an elegant chair that appears to be perched for takeoff! It is well crafted, airy, and contemporary."

Herman Miller: Eames Molded Wood Chair

hermanmiller.com
Reader Service No. 211



"The Eames Molded Wood Chair is a beautiful expression of timeless design. I love this familiar, modern, and forward-thinking new iteration. The organic, simple wood form can be used anywhere."

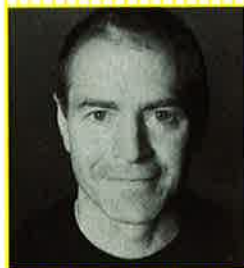
SIXINCH: Blocks

sixinch.us
Reader Service No. 212



"Blocks by SIXINCH are flexible, minimalist cubes, usable as chairs, benches, tables, or architectural elements. They are available in any color with limitless possibilities for forms, customized graphics, and branding. As a designer, I am excited by the creative possibilities!"

Jay Adams



Principal
Jay Adams Design
San Francisco

Steelcase: Gesture

steelcase.com
Reader Service No. 213



"This chair was designed to move as the human body moves. Easily adjusted articulating arms facilitate use of mobile technology devices. This is the chair for those whose work involves more than just sitting at a desktop computer."

HOLLY HUNT: Odense Chair

hollyhunt.com
Reader Service No. 214



"The quality of this chair is impeccable. It is bench-made in the United States using sophisticated joinery, and it is upholstered with perfectly consistent French seaming. The wood is walnut but can be specified in an ebony finish for an elegant look."

JANUS et Cie: Green Side Chair

janusetcie.com
Reader Service No. 215



"Named Green because the shell is made from 100 percent recycled plastic, this chair can be used outdoors and stacks eight high. Beech wood legs bolt to a powder-coated aluminum frame. Spanish designer Javier Mariscal's work is always fun."

LoriAnn Maas, IIDA



Principal
Swanke Hayden Connell
Architects
New York

LEPERE: Play Bench

lepereinc.com
Reader Service No. 216



"What's the best thing about candlelight? Everyone looks good. This is the candlelight of benches: skinny, super lean, and oh-so-graceful. I close my eyes and dream of this bench every day when I get on the subway."

BluDot: Copper Real Good Chair

bludot.com
Reader Service No. 217



"This chair came out a few years ago, but it is recently available in a copper finish. Its patina provides the surface appearance of something that has grown beautiful, especially with age or use. The copper finish gives BluDot's modular chair a softer look and reveals fingerprints."

Aellon: Rimbaud Bench

aellon.com
Reader Service No. 218



"You know when you are walking on the beach and come across an amazing piece of driftwood? That's this bench by Aellon. It is so elegant, simple, and sculptural."