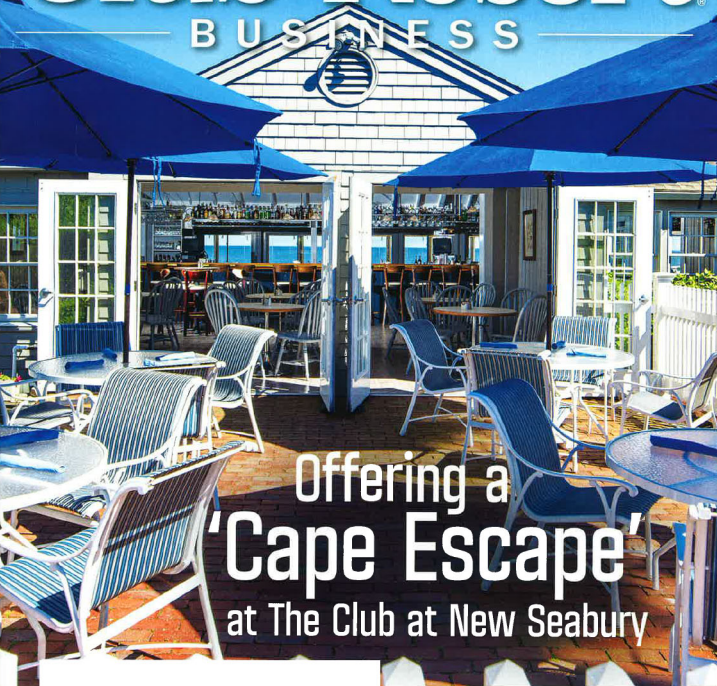


Club+Resort

BUSINESS



Offering a 'Cape Escape' at The Club at New Seabury

INSIDE:

Shining New Light on Wine Rooms

Outdoor Dining: Pleasing the Grill Seekers

The Value of a Great Mechanic



Design Snapshot

FAIRMOUNT COUNTRY CLUB

Chatham, N.J.

Project: Timmins House multipurpose sports, fitness and dining facility

Master Plan/Architect: Studio JBD and Jefferson Group Architecture

Interior Design: Ogando Partners, Whitehouse Station, N.J.

Lighting: Hubbardton Forge pendants, David Trubridge pendants

Flooring: Daltile porcelain tile, Atlas carpet

Bar table: Shawn Austin Furniture, Fort Worth, Texas

Bar stools: JANUS et Cie

Bar tile: Ann Sacks

Interior dining furniture: JANUS et Cie

Pool lounge area: JANUS et Cie chaise loungers

Pool patio: Tropitone umbrellas

Splash pad: County Line Fence Adirondack chairs

Pool: Ledge Lounger in-water loungers

ture is fashioned from a walnut slab and detailed with custom-colored resin that Ogando reports “was derived from a palette found in waters near New Zealand.”

The bar itself features a zebra wood laminate front with gray quartz countertop and is complemented by wicker woven stools. In the main dining area, square metal tables with frosted glass tops were selected for their ease of clean-up and ability to be dressed up with linens for nighttime meals.

To create a consistent look throughout the first-floor interior, Ogando chose a neutral color palette accented by black metal windows and Nano walls that open onto the pool on one side and paddle courts on the other. Black and white tile outfits the bar and main dining room, accentuated by a cool gray interior paint scheme.

This look is further enhanced by metallic detailing that makes its way from the bar area to the outdoors, providing a seasonal balance. “The metal-trimmed, contemporary slot fireplace provides a quick warm-up in the cooler days and evenings for paddle tennis players, while the light grays offset by the tile offer a cooling respite from the summer sun for pool-goers,” Ogando notes.

THE VIEW FROM ON HIGH

To step up to the second level of the sports complex, a steel-and-wood staircase leads to lounge seating, a wide-screen television and a built-in beverage counter. “The furniture arrangement here creates a more intimate space for conversation, with views to the pool,” Ogando notes.

Open space in the center of the floor can be utilized as needed, touting a flexible layout for anything from kids’ activities to banquet-style dinners. Rounding out this floor is a closed lounge containing a 15-foot interactive golf simulator that is used year-round and during inclement weather.

In high season, landlubbers can relax at the patio overlooking the pool or directly alongside swimmers, in furnishings that Ogando specifically selected to suit the casual, family-friendly vibe. In the patio area, powder-coated aluminum dining tables and chairs are designed to withstand sun, water and chlorine. “The chair bottoms and backs in polyvinyl mesh are comfortable for shorts and swimsuits, allowing for air flow and quick drying,” she notes.

In the pool lounge area, chaise loungers that coordinate with the interior bar stools are paired with aluminum, weather-resistant side tables. Even greater protec-

“We’re seeing many long-time members take up paddle tennis, and many are utilizing the pool facilities when they hadn’t been to a swimming pool in years.”

— James Gusella, CCM, COO/GM





Photos Courtesy Studio JBD/Jefferson Group Architecture

tion from the elements is required at the splash pad, where recycled, plastic-molded Adirondack chairs provide a comfortable respite. In-water loungers are also at the ready for swimsuit-clad sunbathers.

Once the final swim of the season has been completed, all poolside tables, chairs, umbrellas and in-pool loungers will be stowed in a sealed storage container—a necessity for protecting them from harsh Northeast

winters. Chaise lounge chairs will be stacked and covered in the pool deck, while the chaise lounge seating pads will be stored indoors and the outdoor couches will be moved to the upper level of the Timmons House.

In the interim, furnishings undergo periodic maintenance with warm, soapy water. “Regular care and cleaning allows us to steer away from the use of harsh chemical cleaners that can harm the finishes on the

furniture,” Gusella notes.

Implementing practices like these helps to ensure the longevity for a well-used addition to Fairmount’s amenity mix; Gusella is already enthused by the level and breadth of members’ use of the new facility. “We’re seeing many long-time members take up paddle tennis, and many are utilizing the pool facilities when they hadn’t been to a swimming pool in years,” he says. **C+RB**

MASTER PLANNING ARCHITECTURE INTERIOR DESIGN PROCUREMENT

Fairmount Country Club, Chatham, NJ



Designing Traditions



PRIVATE CLUBS & HOSPITALITY

STUDIO JBD / JEFFERSON GROUP ARCHITECTURE / Peter Cafaro / PCafaro@JBDandJGA.com / www.JBDandJGA.com / 401.721.0977