

CELEBRATING 10 YEARS OF DESIGN

CTC & G

Connecticut Cottages and Gardens

GOTTAGESGARDENS.COM | MAY 2014

Splendor in the
Garden



WHAT'S NEW

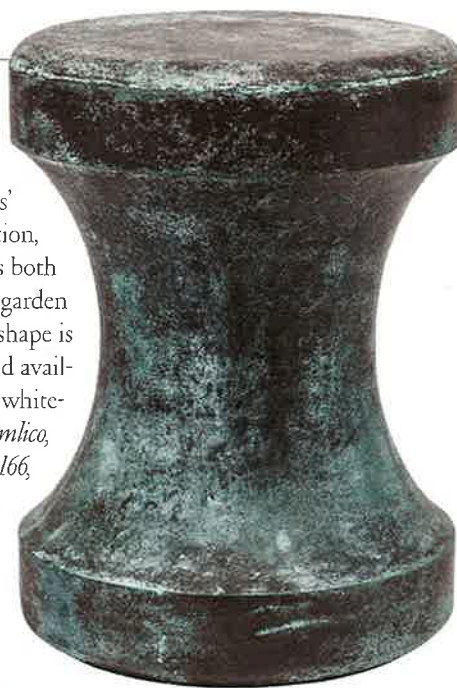


WARM WELCOME

Finished with Spanish Red paint, Urban Electric's classic Cirque pendant puts a twist on traditional. The outdoor-rated light is available in regular or large, and sports antique brass hardware. \$1,710–\$2,380, urbanelectricco.com.

CHECKMATE

New from Made Goods' debut outdoor collection, the Freda stool serves as both a seat and a classic garden accent. Its chess-piece shape is crafted from concrete and available in Verdigris gray or white-washed. \$750, through Pimlico, New Canaan, 203-972-8166, pimlicobome.com.



FORBIDDEN FRUIT

A striking sculptural element indoors or out, Janus et Cie's Eden pear is handcrafted from clay and organic pigments. Topped with a velvet matte finish and suited for exterior use, choose from small (11-by-11 inches) or medium (15-by-15 inches). \$1,082–\$1,392, NYC, 212-752-1117, shopjanusetcie.com.

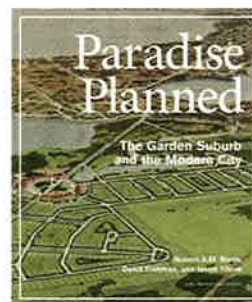


PEDAL PUSHER

Inspired by vintage models, this updated step-through bicycle will stand the test of time. A three-speed internal hub, front handbrake and rear-brake pedals, plus a comfortable leather saddle, offer modern functioning. \$580, MoMa, NYC, 800-793-3167, momastore.org



Fresh Leaves



PARADISE CITY

Written by Robert A.M. Stern, David Fishman and Jacob Tilove, *Paradise Planned* details the history of the garden suburb: bucolic locales that offer a quiet lifestyle quickly accessible to the city. \$95, The Monacelli Press (2013), monacellipress.com.



HOUSE OF FASHION

With a forward by Anna Wintour, *The Style, Inspiration, and Life of Oscar de la Renta* tells the story of an American icon (excerpted on page 46). \$125, Oscar de la Renta, NYC, 212-282-0500, oscardelarenta.com.

SUBURBAN CLASSIC



Schiffer

COMMUTER'S DELIGHT

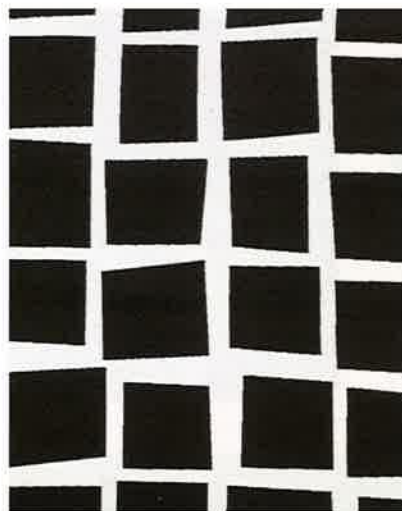
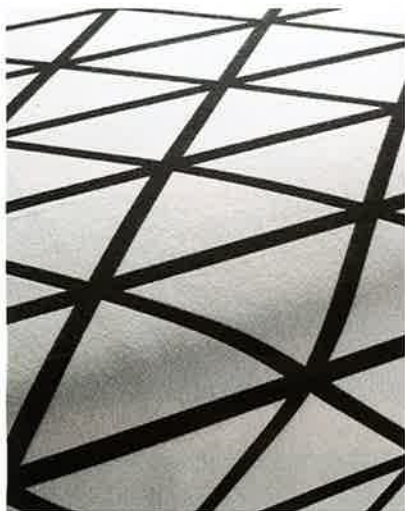
Penned by Patrick Jackson, *Suburban Classic* details how NYC's unparalleled culture and commerce are fueled in part by those who commute in from its outskirts. \$60, Schiffer Publishing (2013), schifferbooks.com.



FABRICS

Take Cover

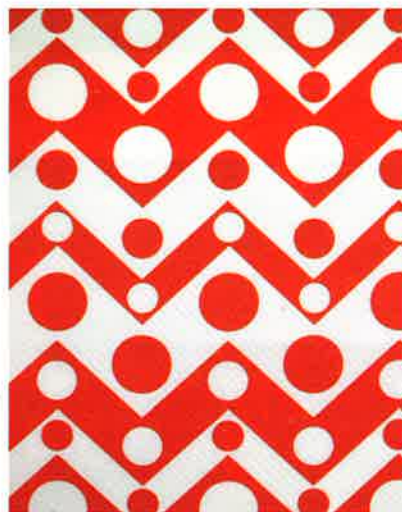
OUTDOOR-APPROVED FABRICS UPHOLSTER YOUR WORLD IN UNEXPECTED COLORWAYS AND SPLASHY GRAPHICS



SALT & PEPPER

(LEFT TO RIGHT)

Jab's Profile in 16, D&D, 212-486-1500, jab.de/en. **Beacon Hill's Mei Festival** in charcoal, D&D, 212-421-1200, beaconhilldesign.com. **Link Outdoor's Cubed Carbon**, through Hines & Co., D&D, 212-754-5880, hinescompany.com, linkoutdoor.com.



TANGERINE TANGO

(LEFT TO RIGHT)

Clarence House's OD Ramo in orange, D&D, 212-752-2890, clarencehouse.com. **Janus et Cie's La Valencia** in Sunrise, NYC, 212-752-1117, janusetcie.com. **Duralee's Ravello** in Adobe, D&D, 212-752-4040, duralee.com.



MY BLUE HEAVEN

(LEFT TO RIGHT)

Manuel Canovas' Tamia in Azur, through Cowtan & Tout, D&D, 212-753-4488, cowtan.com. **Schumacher's Carmel Coastline** in Surf, D&D, 212-415-3900, fschumacher.com. **Nomi Fabric's Plisse** in Aegean, through Hines & Co., D&D, 212-754-5880, hinescompany.com, nomiinc.com.

D&D showrooms listed are to the trade only.



MARKETPLACE

Patio Play

FORMAL TO FANCIFUL, FIND THE LATEST GAME CHANGERS IN OUTDOOR FURNITURE
PRODUCED BY MARY FITZGERALD



Form meets function in the striking Fibonacci Alba lounge chair. Signature Janus-fiber is woven over a powder-coated, galvanized steel frame, available in Smoke or Reed. **Janus et Cie**, NYC, 212-752-1117, janusetcie.com.



MARKETPLACE

NOD TO NAUTICAL

CLASSIC LINES, SHIP-WORTHY MATERIALS AND MARINE COLORS COMBINE FOR COASTAL CHARM





1. Seat yourself or a crowd in the versatile Madison sectional from Oasiq. Transform the look from classic to contemporary with a choice of 12 powder-coated finishes, six mesh selections and an array of fabric options. **Oasiq** (T), NYC, 212-355-0625, oasiq.com. 2. Swing away the day in the Go porch swing, which is made of 100-percent recycled materials (think milk jugs), maintenance free and available in 10 fade-resistant colors. **Design Within Reach**, Stamford, 203-614-0787, Westport, 203-227-9707, dwr.com. 3. Made by hand in Maine, the heirloom-quality Cape Porpoise chair by **Richardson-Allen** is crafted from mahogany and layered with eight coats of marine epoxy to stand up to the elements. Through **Bradley Terrace Outdoor Furnishings**, 773-775-6579, bradleyterrace.com, richardsonallen.com. 4. The Apogee Italian market umbrella by **Giati** wears its stripes on the inside for optimal enjoyment. Through **Walters Wicker** (T), D&D, 212-758-0472, giati.com. 5. The Southampton sofa from Richard Frinier's collection for **Brown Jordan** exemplifies the casual-chic lifestyle. Resin fiber is handwoven over a powder-coated aluminum frame, in a choice of sage or sienna tones. 800-743-4252, brownjordan.com. 6. West Indies meets English garden in Ethan Allen's Millbrook teak collection featuring turned legs and carved arms, outfitted in dozens of stylish outdoor fabric options. **Ethan Allen**, Norwalk, 203-846-9545, ethanallen.com. 7. Gather around the Arbor dining table by Janus et Cie for good times and great summer memories. Choose natural or weathered teak (pictured) finishes. Plus, the 94-inch table boasts a slate stone Lazy Susan, perfect for sharing. **Janus et Cie**, NYC, 212-752-1117, janusetcie.com.