

ARCHITECTURAL DIGEST

THE INTERNATIONAL DESIGN AUTHORITY

APRIL 2012

Designers' Own Homes SIGNATURE STYLE



**SPRING
PREVIEW:**
The Season's
Best in
Culture,
Travel, and
Shopping

**AD'S
RENOVATION
ESSENTIALS**



122



140



78



66



92

Clockwise from top left: Suzanne Kasler's stylish Atlanta terrace. David Easton and James Steinmeyer make modern magical at their Tulsa home. Mosaic tiles by Sicis. McLaren's MP4-12C sports car. Aristocratic elegance in Timothy Corrigan's Los Angeles dining room.

66 ESSENTIALS

Products for a stylish renovation.
By Anne Monoky

70 PEOPLE: THOMAS HEATHERWICK

The London designer talks about soulful buildings and revamping the iconic double-decker bus.
By Josephine Minutillo

76 CELEBRATIONS

Movers and shakers raise a collective glass to the new AD100.
By Samuel Cochran

78 MOTORING: FACTORY FRESH

McLaren's sporty MP4-12C makes its high-octane U.S. debut.
By Simon de Burton

84 ESTATES: ON THE MARKET

Houses worth dreaming about.
Edited by Samuel Cochran

168 AUCTIONS: EXCHANGE RATE

Key sales, surprising steals, and the state of the market.
By Samuel Cochran

IN EVERY ISSUE

- 22 **WHAT'S NEW AT ARCHDIGEST.COM**
- 32 **EDITOR'S PAGE** By Margaret Russell
- 36 **LETTERS**
- 166 **SOURCES** The designers, architects, and products featured this month. By Mackenzie Schmidt

SUBSCRIPTIONS

For subscription information go to archdigest.com, call 800-365-8032, or e-mail subscriptions@archdigest.com

SHOPPING

MOST WANTED

From simple pleasures to ultimate luxuries

WRITTEN AND PRODUCED BY ANNE MONOKY



The latest tableware collection by **Donna Karan Lenox** includes hand-carved vessels of mango wood with a rippled natural finish. Clockwise from left are the 10"- and 18"-h. vases, 12"-dia. bowl, and 18"-dia. platter, which cost \$100-\$225 each at **Bloomingdale's**. bloomingdales.com, 212-729-5900



David Yurman's Bubble Crossover 32" necklace binds a whimsical cluster of pearls with intricate metalwork in a rope motif. The design comes in 18K gold (above) or sterling silver accented with 18K gold (left). Shown are 1.5"-dia. pendants, which cost \$11,000 and \$3,500, respectively; 1"-dia. versions are also available. davidyurman.com, 212-752-4255

Inspired by 1960s Swedish furniture, **Bernhardt's** swank Gustav dining table crowns a cage base of polished stainless steel with a circular glass top. It measures 30" h. x 54" dia. and costs \$1,265. bernhardt.com, 877-442-4321



Haremlique's Hasbahce quilted bedcover features classic toile de Jouy cotton trimmed with braid and tassels. Shown in orange/fuchsia and beige/red, it is also offered in ecru/red. The coverlet will fit a queen or king bed and costs \$1,685 at **Antony Todd**. antonytodd.com, 212-367-7363

STYLED BY MARIANA VERA; TABLE: COURTESY OF BERNHARDT

DISCOVERIES

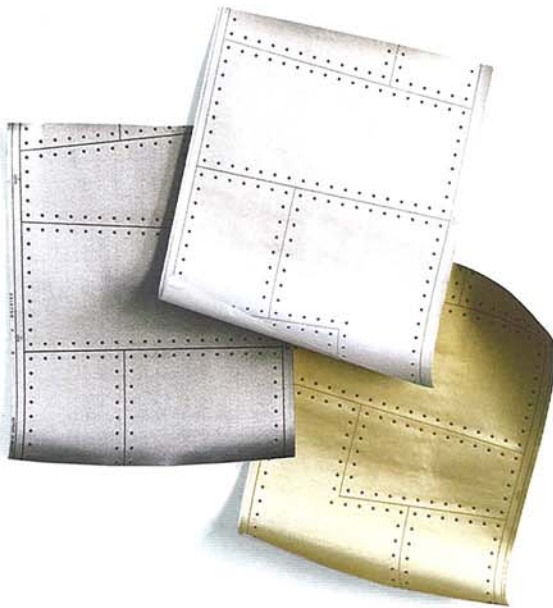


Janus et Cie's Lys chair is completely sheathed in rich Carezza leather. Pictured in black with white contrast whipstitching, the design also comes in brown, orange, gray, blue, red, white, and tan. It measures 32" h. x 25" w. x 25" d.; to the trade. janusetcie.com, 800-245-2687

Handwoven in India, the Connect wool dhurrie by **Hable Construction** for **Elson & Co.** reinterprets a traditional geometric motif in a contemporary color palette. Shown in raspberry, the carpet is also available in sea-blue and bisque. A 6' x 9' rug costs \$1,890; custom sizes may be ordered. elsoncompany.com, 800-944-2858



The raised rivet pattern of **Phillip Jeffries's** Aviator wall covering mimics the surface details of vintage aircraft. It is offered in six metallic shades, including (from left) Quimby Steel, Earhart Aluminum, and Kitty Hawk Copper; to the trade. phillipjeffries.com, 973-575-5414



Created by Danish designer **Rikke Hagen** for **Normann Copenhagen**, this whiskey tumbler weds elegance and functionality, thanks to a distinctive indentation that makes it especially easy to hold. The glass stands 4" tall and is sold for \$61 per pair at **Vertigo Home**. vertigohome.us, 949-494-7547

A round cutout and flared legs add graceful curves to **Restoration Hardware's** 19th Century Keyhole bed, which is crafted of steel in a patinated finish. Prices start at \$1,395 for a twin. restorationhardware.com, 800-762-1005



RUG: COURTESY OF ELSON & CO.; BED: COURTESY OF RESTORATION HARDWARE

—ARCHITECTURAL DIGEST—

DesignEye

A LOOK AT WHAT'S NEW FROM
OUR MARKETING PARTNERS



A MAINE COLLABORATION

The angela adams by Weatherend® collection brings modern design and yacht-building integrity to outdoor furnishings. Renowned design house angela adams and outdoor-furniture innovator Weatherend® Estate Furniture collaborate to create well crafted modern furnishings inspired by the timeless beauty of nature and the ever-changing landscape of Maine. Yacht-building techniques and materials are combined with exterior expertise to produce heirloom-quality furniture of unmatched strength and durability. The angela adams by Weatherend® collection offers dining and casual pieces in a variety of woods and finishes.

For more information visit
weatherend.com/angelaadams

DIFFA'S DINING BY DESIGN

NEW YORK 2012

HONORING ALFREDO PAREDES

Executive Vice President and Chief Retail Creative Officer,
Ralph Lauren Corporation

COCKTAILS BY DESIGN

Thursday, March 22

7–10 p.m.

Designers and guests mingle at Pier 94 during this dazzling preview of the amazing design installations, sampling treats from NYC's top restaurants and enjoying delicious wine and EFFEN Vodka specialty cocktails.

TICKETS: \$150 (includes admission to the Architectural Digest Home Design Show)

PUBLIC VIEWING

Friday, March 23—Sunday, March 25

10 a.m.—7 p.m. daily

Explore the latest in design trends as you view the amazing installations and shop the silent auction.

TICKETS: \$25 (includes admission to the Architectural Digest Home Design Show)

GALA DINNER

Monday, March 26

6:30—11 p.m.

EFFEN cocktails and table hopping are followed by an elegant seated VIP dinner accompanied by dancing and a luxurious silent auction.

INDIVIDUAL DINNER TICKETS: \$500

LOCATION

Pier 94 | 55th Street at Twelfth Avenue | New York City
Co-located with the Architectural Digest Home Design Show

BROUGHT TO YOU BY

EFFEN
VODKA

**NEW YORK
DESIGN
CENTER**



Benjamin Moore
Paints

MEDIA SPONSORS

ARCHITECTURAL DIGEST

MANHATTAN
MAGAZINE

The New York Times
NYTIMES.COM

**LYTV
OPEN
HOUSE
NYC**

**DIFFA
DESIGN
INDUSTRIES
FOUNDATION
FIGHTING
AIDS**

A Perfect Union

At her Regency-style house in Atlanta, Suzanne Kasler makes an up-to-the-minute statement grounded in history

TEXT BY JEN RENZI PHOTOGRAPHY BY PIETER ESTERSOHN PRODUCED BY HOWARD CHRISTIAN



Interior decorator Suzanne Kasler used a neutral palette in the living room of her family's Atlanta house, which was renovated by architectural designers William T. Baker & Assoc. Works by artist Kris Ruhs hang behind a silk-velvet-clad sofa from Kasler's line for Hickory Chair; the clear-acrylic tables and the curtain fabric are by Nancy Corzine. The antique Swedish chairs by the fireplace were found in Paris, and the Agra rug is by Beauvais Carpets. For details see Sources.





Above: Kasler-designed barstools for Hickory Chair stand at the kitchen island; the cabinetry is by Downsvew Kitchens, the sink fittings are by Michael S. Smith for Kallista, and the tile is by Waterworks. **Below right:** The kitchen's dining area features an antique Swedish pine table with Regency chairs; the pendant lights are by James Huniford Collection. **Opposite, from top:** The dining room is furnished with a table and chairs from Kasler's line for Hickory Chair; the room's dark-leather-clad chairs are vintage Jansen, the silver-plate punch bowl is by Ralph Lauren Home, the custom-made wall covering is by de Gournay, and the sisal is by Stark Carpet. Sofas by Janus et Cie and 1950s French woven chairs from the Nicholson Gallery beckon from the terrace; the sunburst mirror is vintage.

Regency influence, which works well with the antique and modern furnishings I was planning to use, whereas this was more classic and rectangular," the decorator recalls. "Plus, the interior had been subjected to a contemporary renovation that didn't appeal to me. Yet I was drawn to it." Atlanta-based residential designer William T. Baker, known for his expertise in traditional idioms, expanded the structure to accommodate a family room, master suite, and larger kitchen; in addition he conceived a separate garage with guest quarters above. Baker also contributed limestone details to the façade, namely Doric columns and Greek Revival-inspired window headers, and painted its red brick a warm white. Indoors, period charm was established through gracefully articulated components, like a mirrored frieze that makes the dining room sparkle in sunshine

or candlelight, as well as accents Kasler believes "strengthen the architectural envelope," including charcoal-painted baseboards that lend rigor to the entrance hall.

Ensuring the interior of a house complements its exterior has been a hallmark of Kasler's taste since she went into business more than two decades ago, but this time around that preference seems less pronounced. "A house can be traditional without being slavish to one style," she observes. "Here that idea translated to bringing in the diverse elements I love, such as mantels from different eras." That mix-and-match mode also accounts for her juxtaposing 20th-century French furniture with 18th-century Scandinavian antiques, and Paris flea-market finds with modern-day lighting. Seasoning this heady blend are highlights from Kasler's home-furnishings collection for Hickory Chair. →



SOURCES

Items pictured but not listed are from private collections or are not sourceable. Items similar to vintage and antique pieces shown are often available from the dealers listed.

ARTISAN: ERIC CHAPEAU

PAGE 56: Eric Chapeau; chapeaudesign.com.

ART SCENE: KRISTIN BAKER

PAGE 62: Kristin Baker is represented by the Suzanne Geiss Co.; suzannegeiss.com.

PEOPLE: THOMAS HEATHERWICK

PAGES 70–72: Heatherwick Studio; heatherwick.com.

MOTORING: MCLAREN

PAGES 78–80: McLaren Automotive Ltd.; mclarenautomotive.com.

COMING HOME

PAGES 92–101: Interior design by Timothy Corrigan Inc.; and Timothy Corrigan Home items throughout; timothy-corrigan.com.

PAGES 94–95: Wall covering by de Gournay, to the trade; degournay.com. Table by Moissonnier; moissonnier.com. **PAGE 96:** Carved vintage chairs from JF Chen; jfchen.com.

Cocktail table by Quatrain, to the trade; therien.com. **PAGE 98:** Chaise longues by Janus et Cie; janusetcie.com. **Trellage panels** by Accents of France, to the trade; accentsoffrance.com. In kitchen, on cabinet-

ry, **House White, Breakfast Room Green, and Calke Green paints** by Farrow & Ball; farrow-ball.com. **PAGE 99:** Cushion of cotton by Fortuny, to the trade; fortuny.com.

On stairs, rug by Stark Carpet, to the trade; starkcarpet.com. **PAGE 100:** In master suite, on bench, velvet by Christopher Hyland Inc., to the trade; christopherhyland.com. In bath, sink fittings by Waterworks; waterworks-

com. **PAGE 101:** Bed curtains of linen by Pindler & Pindler, to the trade; pindler.com.

In reading area, custom-made armchairs and ottoman by Monte Allen, to the trade; monteallen.com; upholstered in velvet by Veronese, to the trade; veronesecouture.com.

THE WHITE ALBUM

PAGES 102–11: Architecture by o2 Architecture; o2arch.com. Interior design by Emily Summers Design Assoc.; emilysummers.com. Landscape architecture by Wayne Carlton Conner & Assoc.; 760-340-9277.

PAGES 104–5: Ottoman by Knoll; knoll.com; upholstered in viscose-polyester by Jane Churchill, to the trade; cowtan.com. On panels, wallpaper by Porter Teleo, to the trade; porterteleo.com. Rug by Madeline Weinrib; madelineweinrib.com. Vanilla Milkshake

paint by Benjamin Moore; benjaminmoore.com. Brass table lamp by Thomas O'Brien for Visual Comfort & Co.; circalighting.com.

On white-and-gray chair, cotton by Muriel Brandolini, to the trade; hollandsherry.com.

PAGES 108–9: In dining room, pendant by Jean de Merry; jeandemerry.com. In kitchen, cabinetry by Bulthaup; bulthaup.com.

Faucet by KWC; kwcamerica.com. Barstools by Knoll; knoll.com. Cushions of leather by Spinneybeck, to the trade; spinneybeck.com.

PAGE 110: In guest room, custom-made bed linens by C&C Milano, to the trade; cec-milano.com. Rug by Madeline Weinrib; madelineweinrib.com. In master bath, vintage chair from Trina Turk Residential; trinaturk.com. Wallpaper by Élitis, to the trade; donghia.com. In master bedroom, on ottomans, cotton by Rubelli, to the trade; donghia.com. **PAGE 111:** Wallpaper by Cannon/Bullock, to the trade; cannonbullock-

com. Pendant from Plug Inc.; pluglighting.com. Faucet by Kohler; us.kohler.com.

PARTNERS IN STYLE

PAGES 112–21: Architecture by Michael Neumann Architecture; mnarch.com. Ralph Lauren Home items throughout; ralphlaurenhome.com. **PAGE 113:** Table by Lucca Antiques; luccaantiques.com. Vintage lantern from Gustavo Olivieri; gustavoolivieriantiques-

com. **PAGES 114–15:** Television by LG; lg.com. Cocktail table by Lucca Antiques; luccaantiques.com. **PAGE 116:** In kitchen, vintage light fixtures from Obsolete; obsoleteinc.com. Countertops of bluestone from Alan Court & Assoc.; 631-324-7497. Cabinet pulls by E. R. Butler & Co.; erbutler.com. **PAGE 117:** Vase by JF Chen; jfchen.com. Vintage floor lamp from Obsolete; obsoleteinc.com. **PAGES 118–19:** Sofa, armchairs, and cocktail table by Sempre from Jalan Jalan Collection Inc.; jalanmiami.com. Table by Lucca Antiques; luccaantiques.com. **PAGE 120:** In master bath, sink fittings by Lefroy Brooks; lefroybrooks.com. Sconces and tub by Urban Archaeology; urbanarchaeology.com. Vintage sculpture from Wyeth; wyethome.com.

A PERFECT UNION

PAGES 122–31: Architecture by William T. Baker & Assoc. Ltd.; wt baker.com. Interior design by Suzanne Kasler Interiors; suzannekasler.com. Suzanne Kasler for Hickory Chair items throughout are available to the trade; hickorychair.com. Curtains throughout custom made by Willard Pitt Curtain Makers, to the trade; 404-355-8232.

PAGES 122–23: Tables and curtains of linen-silk by Nancy Corzine, to the trade; nancycorzine.com. Rug by Beauvais Carpets, to the trade; beauvaiscarpets.com. **PAGE 125:** Antique mantel from François & Co.; francoisandco.com. **PAGE 126:** In dining room, wall covering by de Gournay, to the trade; degournay.com. Rug by Stark Carpet, to the trade; starkcarpet.com. On terrace, sofas by Janus et Cie; janusetcie.com. **PAGE 127:** Cabinetry by Downsvieview Kitchens; downsvieviewkitchens.com. Sink fittings by Michael S. Smith for Kallista; kallista.com. Tile by Waterworks; waterworks.com. Pendants by James Huniford Collection; jameshuniford-

com. **PAGE 128:** Rug by Suzanne Kasler for Safavieh; safavieh.com. Curtains of linen by Nancy Corzine, to the trade; nancycorzine.com. In guest bath, étagère and mirror by Restoration Hardware; restorationhardware-

com. Sconces by Visual Comfort & Co.; circalighting.com. Washstand, sink fittings, and tile by Waterworks; waterworks.com. **PAGE 129:** In guest room, throughout, silk by Brunschwig & Fils, to the trade; brunschwig.com. In master sitting room, Sandy Hook Gray paint by Benjamin Moore; benjaminmoore-

com. Sofa by Nancy Corzine, to the trade; nancycorzine.com. **PAGE 130:** Bed, chests, and bench by Nancy Corzine, to the trade; nancycorzine.com. On bench, cotton by Fortuny, to the trade; fortuny.com. Lamps by Christopher Spitzmiller Inc.; christopherspitzmiller.com. Silk rug by Stark Carpet, to the trade; starkcarpet.com. In bath, tub and fittings by Waterworks; waterworks.com. In master bedroom, chairs by Rose Tarlow Melrose House, to the trade; rosetarlow.com. Table by BeeLine Home; bunnywilliams.com. **PAGE 131:** Vanity and mirror by Nancy Corzine, to the trade; nancycorzine.com.

MORE IS MORE

PAGES 132–39: Architecture and interior design by Sig Bergamin; sigbergamin-

com.br. **PAGES 132–33:** On sofas, velvet by Rubelli, to the trade; donghia.com. **PAGE 135:** Cushion of velvet by Rubelli, to the trade; donghia.com. **PAGES 136–37:** Vintage side table from Malmaison; malmaison.1stdibs.com. **PAGE 138:** In master bedroom, vintage leather armchair from Newel; newel.com. **PAGE 139:** On headboard, velvet, and curtains of silk by Kravet, to the trade; kravet.com.

GENTLEMEN'S AGREEMENT

PAGES 140–47: Interior design by David

Easton Inc.; daveideastoninc.com. David Easton for Lee Jofa items throughout are available to the trade; leejofa.com.

PAGES 140–41: Vintage chairs from Charles Faudree Inc.; charlesfaudree.com; upholstered in velvet by Kravet, to the trade; kravet.com. Vintage mirror from Mantiques Modern; mantiquesmodern.com. Gray Mist paint by Pratt & Lambert; prattandlambert-

com. **PAGES 142–43:** Schiaparelli sofa custom made by Frederick P. Victoria & Son Inc.; fpvictoria.com. In breakfast area, antique hall seat from Charles Faudree Inc.; charlesfaudree.com. **PAGES 144–45:** In dining room, pendant by Artemide; artemide.us. In study, étagère custom made by Dale Gillman Antique Warehouse; 918-592-2900. In kitchen, cabinetry by David Hollingsworth; cheyennewoodworks.com. Ovens and refrigerator by Viking; vikingrange.com. **PAGES 146–47:** In master bedroom, wallpaper by Phillip Jeffries Ltd., to the trade; philippejeffries.com. Floor lamps by Visual Comfort & Co.; circalighting.com. In guest room, wall covering by Phillip Jeffries Ltd. **LEAP OF FAITH**

PAGES 148–53: Interior design by Paolo Moschino for Nicholas Haslam Ltd.; and Nicholas Haslam Ltd. items; nicholashaslam-

com. **PAGES 152–53:** In master bedroom, bed linens by D. Porthault; dporthault.com. Pillows of cotton by Georges Le Manach, to the trade; claremontfurnishing.com. **INDUSTRIAL REVOLUTION**

PAGES 154–65: Architecture by Pablo Carvajal Urquijo Architect; pablocarvajal.com. Interior design by El Estudio de Isabel López-Quesada; isabellopezquesada.com. Landscape design by Fernando Caruncho & Assoc.; fernandocaruncho.com. **PAGE 157:** Antique mantel from Ramón Portuondo Wakonigg Antigüedades; ramonportuondo-

com. **PAGES 158–59:** Lounge chair and ottoman by Herman Miller; hermannmiller-

com. **PAGE 160:** Chairs and ottomans from El Jardinero; fernandocaruncho.com. **PAGE 161:** In kitchen, cabinetry is discontinued, similar styles available through Bulthaup; bulthaup.com. Cooktop and hood by Gaggenau; gaggenau.com. Refrigerator by GE; geappliances.com. Chairs by Knoll; knoll-

com. **PAGE 162:** On chaise, linen blend by Bennison Fabrics Ltd., to the trade; bennisonfabrics.com. **PAGE 163:** Tub by the Water Monopoly; watermonopoly.com. Sink fittings by THG; thgusa.com. □

ARCHITECTURAL DIGEST AND AD ARE REGISTERED TRADEMARKS OF ADVANCE MAGAZINE PUBLISHERS INC. COPYRIGHT © 2012 CONDÉ NAST. ALL RIGHTS RESERVED. PRINTED IN THE U.S.A.

VOLUME 69, NO. 4. ARCHITECTURAL DIGEST (ISSN 0003-8520) is published monthly by Condé Nast, which is a division of Advance Magazine Publishers Inc. PRINCIPAL OFFICE: Condé Nast Building, 4 Times Square, New York, NY 10036. S. I. Newhouse, Jr., Chairman; Charles H. Townsend, Chief Executive Officer; Robert A. Sauerberg, Jr., President; John W. Bellando, Chief Operating Officer/Chief Financial Officer; Jill Bright, Chief Administrative Officer. Periodicals postage paid at New York, NY, and at additional mailing offices. Canada Post Publications Mail Agreement No. 40644503. Canadian Goods and Services Tax Registration No. 123242885-RT0001. Canada Post: Return undeliverable Canadian addresses to P.O. Box 874, Station Main, Markham, ON L3P 8L4.

POSTMASTER: SEND ADDRESS CHANGES TO ARCHITECTURAL DIGEST, P.O. Box 37641, Boone, IA 50037-0641. FOR SUBSCRIPTIONS, ADDRESS CHANGES, ADJUSTMENTS, OR BACK ISSUE INQUIRIES: Please write to ARCHITECTURAL DIGEST, P.O. Box 37641, Boone, IA 50037-0641, call 800-365-8032, or e-mail subscriptions@archdigest.com. Please give both new and old addresses as printed on most recent label. Subscribers: If the Post Office alerts us that your magazine is undeliverable, we have no further obligation unless we receive a corrected address within one year. If during your subscription term or up to one year after the magazine becomes undeliverable, you are ever dissatisfied with your subscription, let us know. You will receive a full refund on all unmailed issues. First copy of new subscription will be mailed within eight weeks after receipt of order. Address all editorial, business, and production correspondence to ARCHITECTURAL DIGEST, 4 Times Square, New York, NY 10036. For permissions and reprint requests, please call 212-630-5656 or fax requests to 212-630-5883. Visit us online at archdigest.com.

To subscribe to other Condé Nast magazines, visit condenastdigital.com. Occasionally we make our subscriber list available to carefully screened companies that offer products and services that we believe would interest our readers. If you do not want to receive these offers and/or information, please advise us at P.O. Box 37641, Boone, IA 50037-0641 or call 800-365-8032.

ARCHITECTURAL DIGEST IS NOT RESPONSIBLE FOR THE RETURN OR LOSS OF, OR FOR DAMAGE OR ANY OTHER INJURY TO, UNSOLICITED MANUSCRIPTS, UNSOLICITED ARTWORK (INCLUDING, BUT NOT LIMITED TO, DRAWINGS, PHOTOGRAPHS, AND TRANSPARENCIES), OR ANY OTHER UNSOLICITED MATERIALS. THOSE SUBMITTING MANUSCRIPTS, PHOTOGRAPHS, ARTWORK, OR OTHER MATERIALS FOR CONSIDERATION SHOULD NOT SEND ORIGINALS UNLESS SPECIFICALLY REQUESTED TO DO SO BY ARCHITECTURAL DIGEST IN WRITING. MANUSCRIPTS, PHOTOGRAPHS, AND OTHER MATERIALS SUBMITTED WILL NOT BE RETURNED.