

JANUS et Cie®



TEXTILES

NEW THE OCEANIA COLLECTION

From above, our world reveals dazzling patterns and grooves, both the marks of civilization and the magnificence of natural landscape. With nature as a catalyst for creation, we introduce 10 new fabrics inspired by our world as seen from above, and this essential discovery of new perspectives.



BAROSSA

This handsome all-over texture utilizes a soft boucle yarn in contrasting warp colors to achieve a refined look. Offered in a marvelous palette of colors, Barossa is a tribute to the rich rainbow of hues that tint the gentle hills and glorious vineyards of the idyllic Barossa Valley. Soft as it is durable, the fabric provides a deceptively complex pattern that pairs elegantly in any setting.

5 colors, 65,000 Wyzenbeek

OVERLAND

A discovery with each touch, Overland is named for Australia’s most famous six-day, five-night epic trek between Cradle Valley in the north and Lake St. Clair in the south. This richly ornate pattern pays homage to the uniquely breathtaking views as seen from the Overland voyage, its varied textures symbolic of the hike’s stunning landmarks—eucalyptus forests, exposed alpine moors, buttongrass valleys and blooming wildflowers.

7 colors, 50,000 Wyzenbeek

GRASSLANDS

Seemingly infinite, the mesmerizing grasslands of Northern Australia come alive in this intricate pattern, a hypnotic harmony of tiny colored threads, making Grassland highly versatile in connecting different aspects of a color scheme. Like a delicate breeze over a field of dry grasses, this fabric is soft to the touch and effortlessly beautiful.

6 colors, 50,000 Wyzenbeek

ULURU

Uluru, the vast, landmark monolith in the heart of Central Australia, is known for changing colors with the sunrise and sunset. Best viewed from a distance, Uluru’s majesty is revealed rhythmically and serves as the inspiration for an intricately beautiful textile. This tightly woven fabric is created from a melody of varied colored threads, each hue taking the stage at different moments in the pattern. Uluru’s adaptable palette makes this extraordinary collection well suited for interior and exterior environments alike.

5 colors, 50,000 Wyzenbeek

CONTINENTAL DRIFT

The fascinating movement of its namesake defines Continental Drift, a dynamic textile with stimulating horizontal shifts and curves as well as a distinctive flow of pattern. With each turn of a thread, the fabric’s complex details resemble hills and narrow inlets as viewed from above. Continental Drift’s thin striations make for an intriguingly smooth texture.

6 colors, 50,000 Wyzenbeek

NEW THE OCEANIA COLLECTION



GREAT OCEAN ROAD

Named for one of the most beautiful scenic drives in the world, Great Ocean Road’s linear design and meticulous tack stitch evoke the 151-mile stretch of highway that hugs the southeastern coast of Australia. Well suited for architectural cushions, Great Ocean Road’s captivating line gradient is reminiscent of the wave patterns in a shoreline.

6 colors, 30,000 Wyzenbeek

FRASER

Just off the east coast of Australia lies Fraser Island, the world’s largest sand island and a breathtaking site with shifting dunes and tropical rainforests. Its exceptional, unique landscape inspires the varied textures and eclectic threads of Fraser, a gorgeous performance fabric. Each pucker and divot in the weave reveals new coordinating hues that blend to form a truly compelling pattern.

5 colors, 60,000 Wyzenbeek

REMARKABLE

This tactile, commanding fabric is inspired by jagged mountain ranges with magnificent, perfectly formed peaks, namely the majestic Remarkables mountain range that dominates Queensland’s southeastern coast. An impressive, bold pattern, Remarkable’s distinctively striking shapes juxtapose with its soft, velvety weave.

5 colors, 50,000 Wyzenbeek

PITCH STRIPE

Cricket is one of Australia’s favorite—and immensely winning—pastimes. An intense sport requiring balance and concentration, the game is executed on a long, striped inner band of the cricket field called a pitch. With crisp, clean lines, Pitch Stripe embodies the same classic, athletic spirit and relaxed sophistication of a freshly manicured cricket pitch. The fabric, offered in an expansive palette of nine colors, upholds beautifully and wears exceedingly well.

9 colors, 90,000 Wyzenbeek

PITCH STRIPE WIDE

A handsome variation on its namesake fabric, Pitch Stripe Wide boasts bold strokes with an elegant, subtle sheen. Offered in a soft palette of greys and neutrals, this textile is light to the touch. Its tiny stitches add a beautiful texture and emphasize the universal appeal of a smooth, straight line.

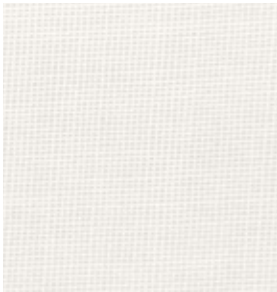
4 colors, 90,000 Wyzenbeek



AUBREE
Blanc*



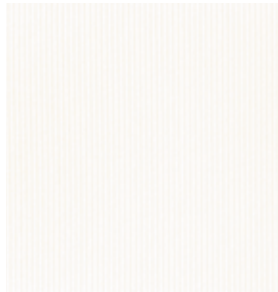
ANNABEL
Porcelain



BORGATA
Cream



GOSSAMER
Cloud



SINGLE FAILLE
Slipperwhite* S U



RAVELLA
Vellum



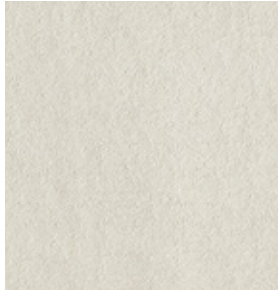
SCHOONER
Ivory U



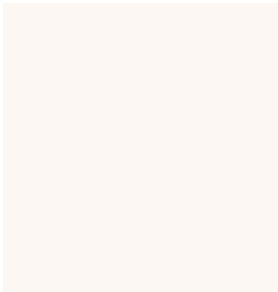
DUNE
Natural U



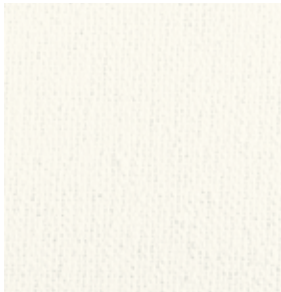
DRIFT
Fleece*



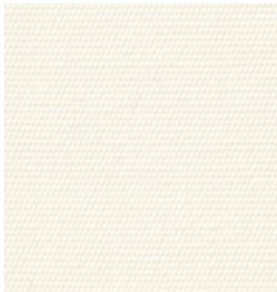
NEW CONTINENTAL DRIFT
White Smoke



WEATHERSKIN
Cordovan Ghost



BOUCLE
Soda



ASTI
Whitewash S U



SPINNAKER AWNING
Whitewash



NEW AUBREE
Pearl*



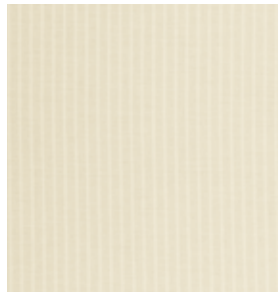
NEW AUBREE
Alabaster*



NEW GREAT OCEAN ROAD
Khaki* U



HEAVY CANVAS
Linen



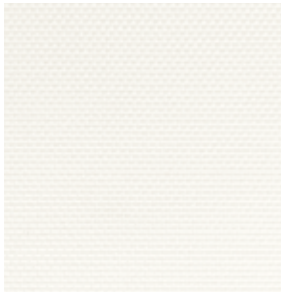
CANVAS TICKING
Linen Stripe*



NEW AUBREE
Sandstone*



NEW ULURU
Seashell*



SCHOONER
Snow U



CROSS CURRENT
Meringue*



DIXON
Snow



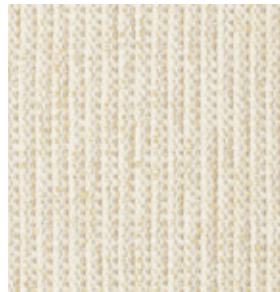
WEATHERSKIN
Cordovan Rice Cake



NEW PITCH STRIPE
Sandstone U



NEW PITCH STRIPE WIDE
Sandstone U



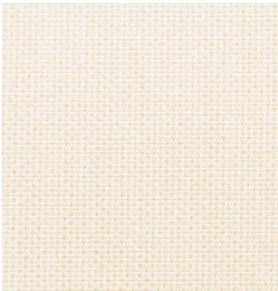
CREEL
Oyster*



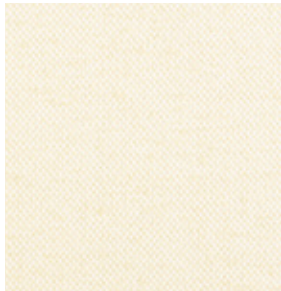
BROOK TROUT
Sandalwood*



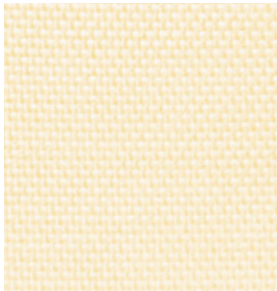
SHOAL
Sand*



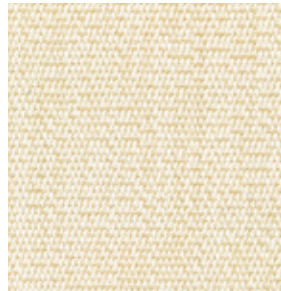
DUFFLE
Tonal Beige S U



BOUCLE
Bisque



SCHOONER
Sheets U



HEATHER
Bisque S U



RIVERWIND
Buff*



WALCOURT
Oat Grain



OXFORD
Khaki



SIMON
Buckwheat



NORFOLK
Wheat



STRATA
Gris U



11-03 SEA FAN
Clay



NEW PITCH STRIPE
Dolphin **U**



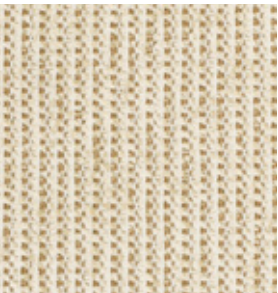
NEW PITCH STRIPE WIDE
Dolphin **U**



HEAVY CANVAS
Jute



CANVAS TICKING
Jute Stripe*



CREEL
Malt*



SCHOONER
Wheat **U**



ATHENA
Falcon **U**



36-00 RIVERWIND
Ecru*



HEATHER
Broom **S U**



ASTI
Shiitake **S U**



BY-THE-SEA
Flax



PARADISO
Driftwood*



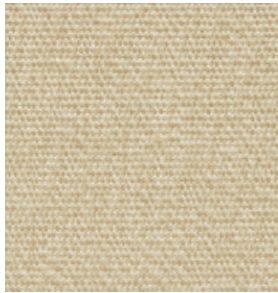
SUMMER
Sarong*



BOUCLE
Sand



SAMPAN
Bamboo* **S U**



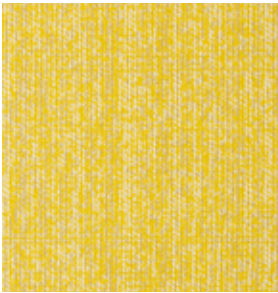
HEATHER
Quail **S U**



SANDUNES
Travertine*



CROSS CURRENT
Gold*



DRIFT
Dandelion*



NEW CONTINENTAL DRIFT
Jonquil



NEW ULURU
Jonquil*



CREEL
Sunshine*



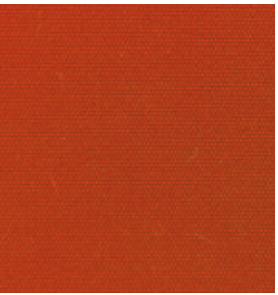
PIQUE
Goldenrod S U



BY-THE-SEA
Canary



WEATHERSKIN
Chinook Cinnabar



JARDIN SOLID
Terracotta U



RIVERWIND
Vermilion*



SPINNAKER
Persimmon S U



BANDEAU
Papaya*



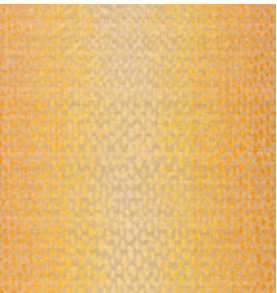
CAPRI
Butterfly U



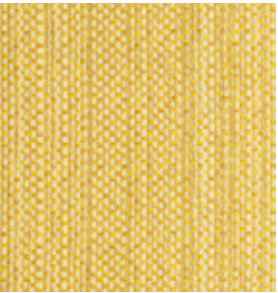
JARDIN SOLID
Lemonade U



ALSACE
Antique Gold U



BROOK TROUT
Naples*



SHOAL
Daffodil*



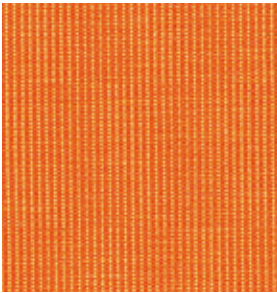
BANDEAU
Coral*



BY-THE-SEA
Nasturtium



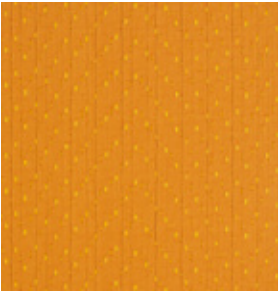
NEW GREAT OCEAN ROAD
Clementine* U



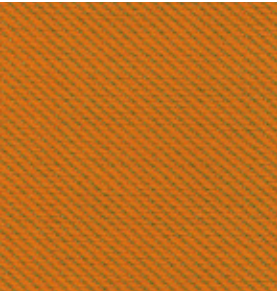
PINCORD
Cayenne* S U



LA VALENCIA
Sunrise U



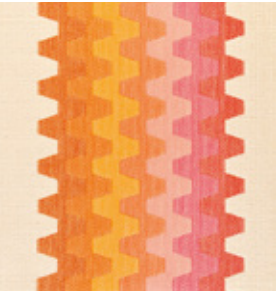
CROSS CURRENT
Cedar*



REGISFORD
Papaya U



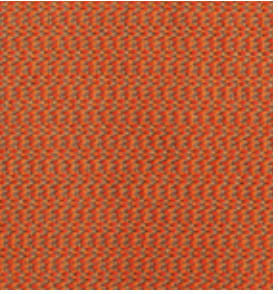
PLUME
Rambutan



ZIP
Sunburst*



PARADISO
Sunkissed*



NEW GRASSLANDS
Masala*



NEW ULURU
Masala*



NEW REMARKABLE
Amber*



NEW BAROSSA
Cardinal



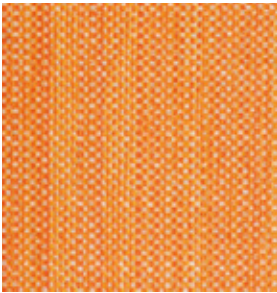
NEW AUBREE
Crimson*



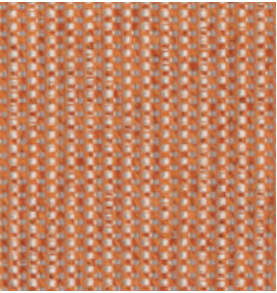
NEW OVERLAND
Amber* U



SPINNAKER
Copper S U



SHOAL
Mandarin*



CREEL
Fiesta*



GEO
Cadmium



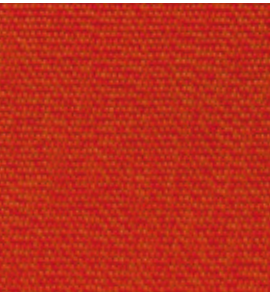
NEW PITCH STRIPE
Crimson U



NEW CONTINENTAL DRIFT
Cardinal



NEW GREAT OCEAN ROAD
Claret* U



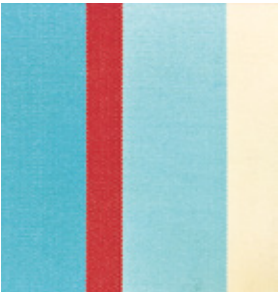
HEATHER
Tabasco S U



ASTI
Rouge U



JARDIN MINI STRIPE
Multi [U](#)



JARDIN MAXI STRIPE
Multi [U](#)



SHOAL
Hibiscus*



BY-THE-SEA
Begonia



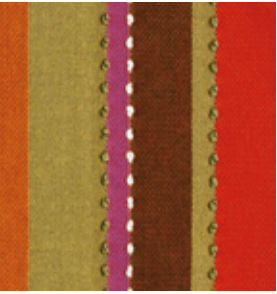
NEW BAROSSA
Watermelon



NEW OVERLAND
Cherry Tart* [U](#)



PALM BEACH
Fuchsia [U](#)



BARGELLO
Key West*



PARADISO
Geranium*



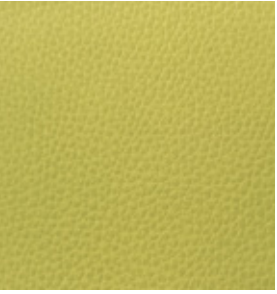
NEW PITCH STRIPE
Quince [U](#)



CAPRI
Cicada [U](#)



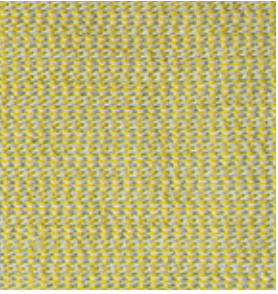
BY-THE-SEA
Snap Pea



WEATHERSKIN
Chinook Bosc



RIVERWIND
Celery*



NEW GRASSLANDS
Limerick*



NEW OVERLAND
Limerick* [U](#)



NEW FRASER
Limerick*



SHOAL
Iguana*



CREEL
Pasture*



CROSS CURRENT
Sprout*





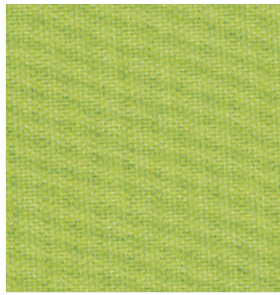
BROOK TROUT
Foliage*



PARADISO
Jungle*



RIVERWIND
Citrine*



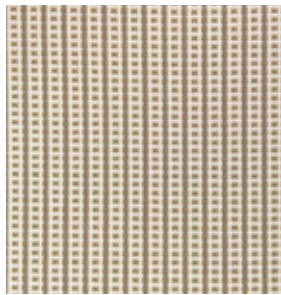
DUFFLE
Wasabi S U



SPINNAKER
Parrot S U



BARCODE
Greystone S



MIRO
Taupe



NEW REMARKABLE
Otter*



NEW OVERLAND
Otter* U



NEW GREAT OCEAN ROAD
Otter* U



LA VALENCIA
Verde U



VAN GOGH
Kiwi



ZIP
Grasshopper*



NEW PITCH STRIPE
Avocado U



GEO
Leaf



ANNABEL
Seal



SHOAL
Hickory*



RAVELLA
Friar



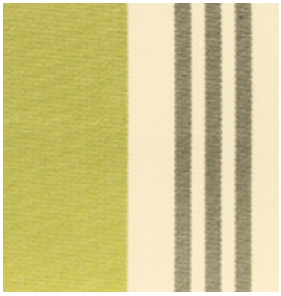
WEATHERSKIN
Cordovan Tawny



LUXE
Taupe



CAPRI
Aloe U



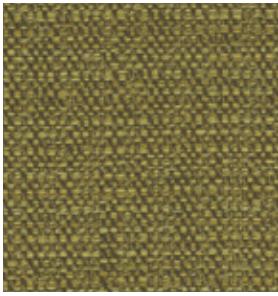
REGENCY
Aloe U



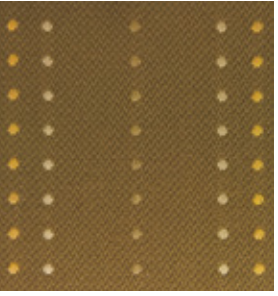
SPINNAKER
Moss U



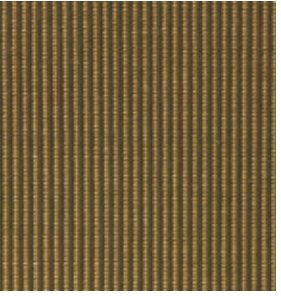
ASTI
Artichoke S U



ATHENA
Lichen U



CONGA LINES
Elephant*



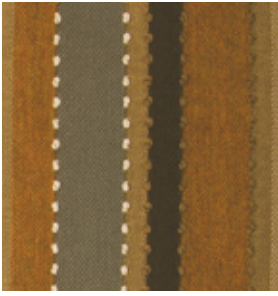
TWILL
Praline* U



ECHO
Coconut S U



LUXE
Dove



BARGELLO
Cape Cod*



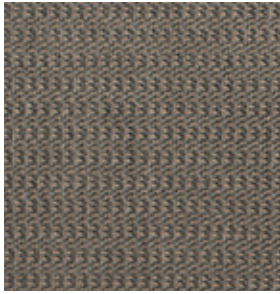
BEGAWAN
Peace S



HEATHER
Greige S U



BY-THE-SEA
Mocha



NEW GRASSLANDS
Titanium*



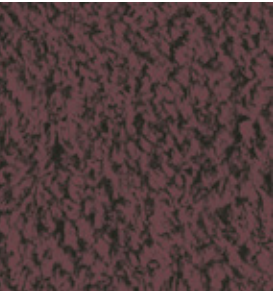
SPINNAKER
Pebble S U



SPINNAKER
Bark U



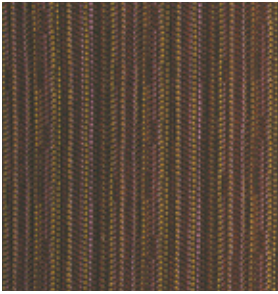
JARDIN SOLID
Lilac U



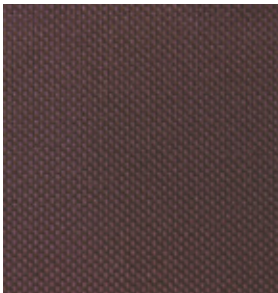
RAVELLA
Plum



PALM BEACH
Port U



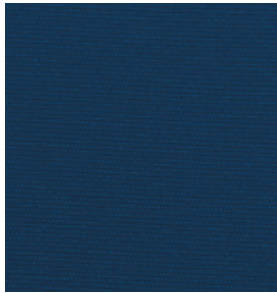
VERA
Plum*



SCHOONER
Syrah **U**



NEW PITCH STRIPE
Cadet **U**



CAPRI
Midnight **U**



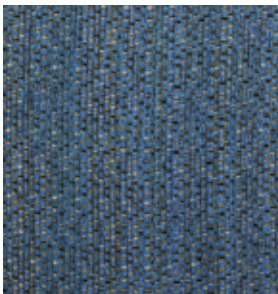
NEW CONTINENTAL DRIFT
Deep Space



BY-THE-SEA
Calypso



PARADISO
Tropical*



SHOAL
Nautical*



ANNABEL
Midnight



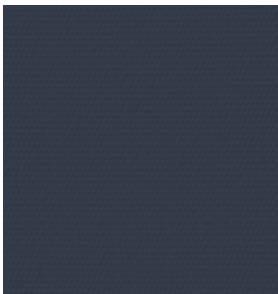
HEATHER
Indigo **S U**



CREEL
Regatta*



BOUCLE
Ink



SPINNAKER
Dark Marine **S U**



LUXE
Marine



ANTIQUE DENIM
Indigo **U**



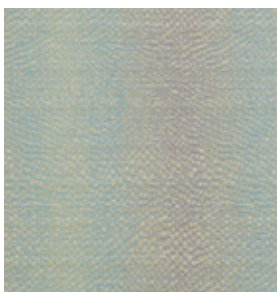
JARDIN 2 INCH STRIPE
Natural **U**



SAFARI
Marine*



BANDEAU
Midnight*



BROOK TROUT
Delphinium*



HEAVY CANVAS
Island



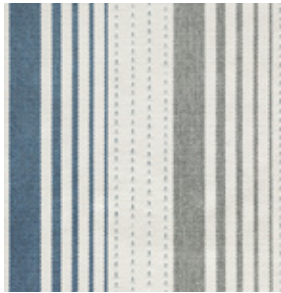
CANVAS TICKING
Island Stripe*



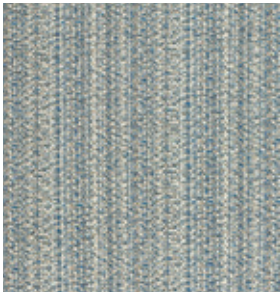
ZIP
Rainwater*



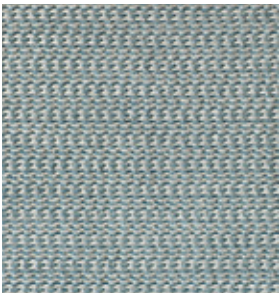
BROOK TROUT
Frost*



NEW GREAT OCEAN ROAD
Carbon* U



NEW FRASER
Blizzard*



NEW GRASSLANDS
Blizzard*



SKYLINE
Aquarius*



BY-THE-SEA
Aqua



BROOK TROUT
Deep Water*



NEW CONTINENTAL DRIFT
Spa



NEW GREAT OCEAN ROAD
Spa* U



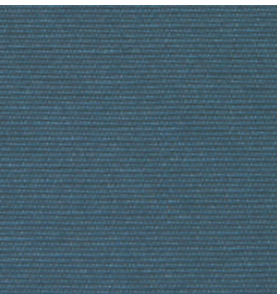
NEW OVERLAND
Cadet* U



NEW REMARKABLE
Cadet*



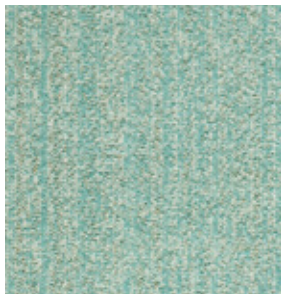
NEW BAROSSA
Silverlake



ASTI
Steel S U



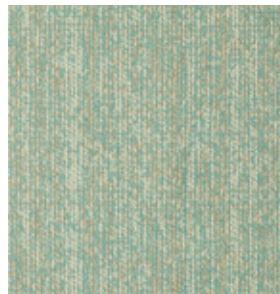
NEW FRASER
Cadet*



NEW ULURU
Viridian*



NEW PITCH STRIPE
Viridian



DRIFT
Pool*



NEW BAROSSA
Viridian



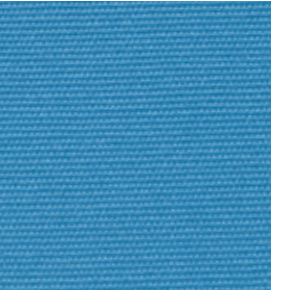
SPINNAKER
Cactus S U



SANDUNES
Bluesea*



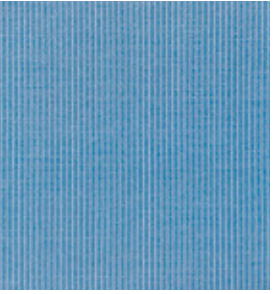
PINPOINT
Olympic S U



ASTI
Azure S U



BERMUDA
Sky



PINCORD
Sky* S U



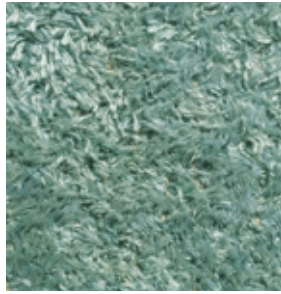
SANDUNES
Jamaica*



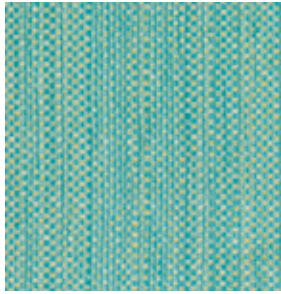
CROSS CURRENT
Spa*



NEW OVERLAND
Peacock* U



RAVELLA
Rain



SHOAL
Cascade*



JARDIN MAXI STRIPE
Blue Sea U



JARDIN MINI STRIPE
Blue Sea U



SAFARI
Sky*



CREEL
Sea Isle*



HELENA
Terra



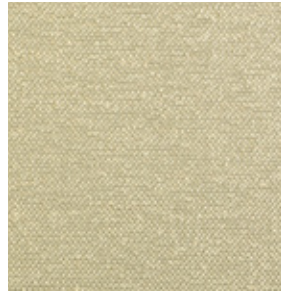
JARDIN SOLID
Turquoise U



PLUME
Zinc



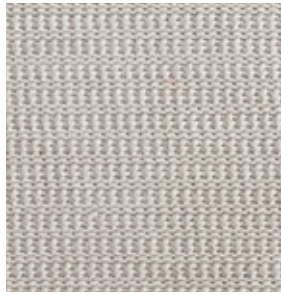
FROSTED LEAF
Verdigris



BOUCLE
Silver



NEW FRASER
Dolphin*



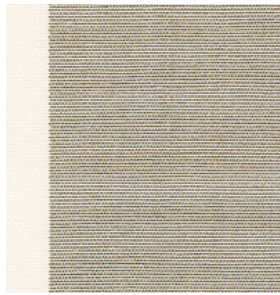
NEW GRASSLANDS
White Smoke*



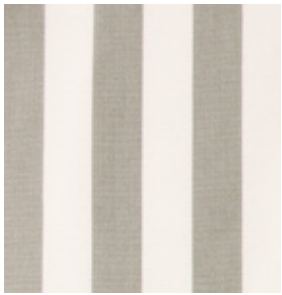
NEW OVERLAND
Platinum* [U](#)



CHARLESTON
Gravel* [U](#)



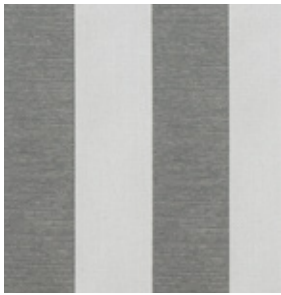
JARDIN 3½ INCH STRIPE
Grey / White [U](#)



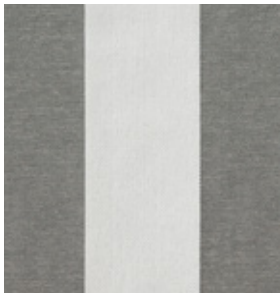
CASINO
Grey [U](#)



NEW REMARKABLE
Chrome*



NEW PITCH STRIPE
Peppercorn [U](#)



NEW PITCH STRIPE WIDE
Peppercorn [U](#)



RAVELLA
White Gold



NEW PITCH STRIPE
Graphite [U](#)



NEW FRASER
Platinum*



NEW GRASSLANDS
Platinum*



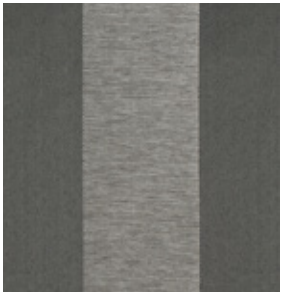
SAVANNAH
Flannel Stripe



SPINNAKER
Heather Grey [S](#) [U](#)



SAFARI
Stone*



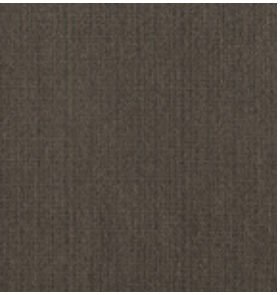
NEW PITCH STRIPE WIDE
Graphite [U](#)



NEW BAROSSA
Titanium



NEW CONTINENTAL DRIFT
Graphite



NEW AUBREE
Graphite*



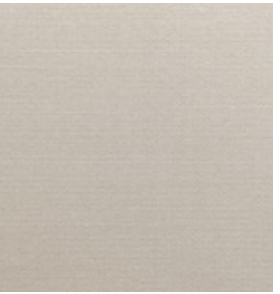
HEAVY CANVAS
Aluminum



NEW AUBREE
Dolphin*



DRIFT
Cloud*



JARDIN SOLID
Grey [U](#)



CROSS CURRENT
Nickel*



PARADISO
Inlet*



CANVAS TICKING
Aluminum Stripe*



RIVERWIND
Slate*



BOUCLE
Zinc



CONGA LINES
Manhattan*



GUSTOV
Gravel [U](#)



WEATHERSKIN
Cordovan Ash



ANNABEL
Fog



NEW REMARKABLE
Platinum*



NEW ULURU
Peppercorn*



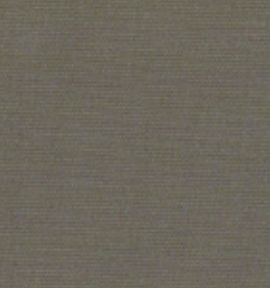
BY-THE-SEA
Silver Grey



SURREY
Slate [U](#)



DRIFT
Flint*



PALM BEACH
Granite [U](#)



LUXE
Smoke



ANNABEL
Shark



CHLOE
Cream Black **U**



SEA FAN
Licorice



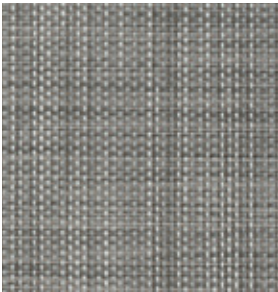
CREEL
Black Pearl*



JARDIN 2 INCH STRIPE
Black / White **U**



DIXIE
Black / White



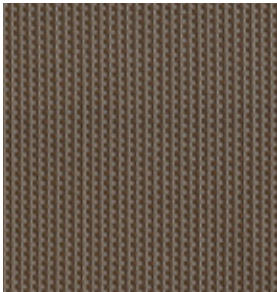
MESH M1
Starlight



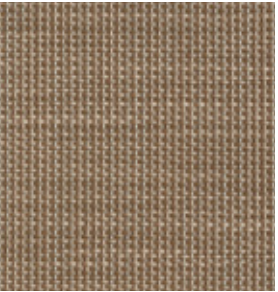
MESH M2
Glacier II



MESH M2
Platinum II



MESH M2
Taupe II



MESH M2
Tweed II



BY-THE-SEA
Lava



SHOAL
Orca*



HEAVY CANVAS
Onyx



CANVAS TICKING
Onyx Stripe*



BROOK TROUT
Phantom*



HEATHER
Char **S U**



PINCORD
Zebra* **S U**



ANNABEL
Panther



ASTI
Galaxy **S U**



FURNITURE COVER
Light Grey **U**



FURNITURE COVER
Tan **U**

* Selvedge shown top/bottom

S Standard (no upcharge)

U Available for JANUS Umbrella canopies

©2019 JANUS et Cie. All rights reserved. JANUS et Cie and the Topiary logo are trademarks and service marks of JANUS et Cie, registered in the United States and in several other countries. Our tag lines, slogans, photography and the designs of certain furniture are also the proprietary intellectual property of JANUS et Cie. All third party marks and third party photographs are used with permission from their respective owners. Violation of JANUS et Cie's intellectual property rights will be prosecuted to the fullest extent of the law.



JANUS et Cie®

JANUSETCIE.COM +1 310 652 7090