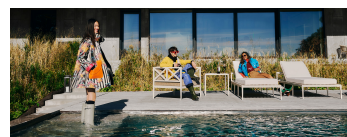




JANUS et Cie®

BEYOND TOPIARY



Falling Into Winter

As golden leaves and brisk mornings drift into wintry wonderlands, ELLE DECOR's 2022 Winter issue highlights some of our favorite seasonal outdoor activities—stargazing under a blanket, roasting marshmallows over a campfire, or even bundling up poolside to soak up the sun's rays in style.

Pictured (top): Knot armchairs with Asti cushions, Anatra armchairs, Gina dining table, Ambrosia pomegranate sculpture, and Veener tray; (center left): Knot three-seat sofa with Asti fabric, cocktail table, and side table; (center): Anatra teak high-back lounge chairs with Boucle cushions and side tables; (center right): Fibonacci Vantana double chaise lounge with Spinnaker toss pillows; (bottom): Azimuth Cross lounge chair with Luxe fabric, chaise lounges, and side table and Waitsfield lantern

For more sweater-weather inspiration, we invite you to browse our Into the Woods Pinterest board exploring the best of the great outdoors from fall to winter and beyond.