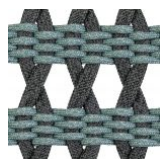




JANUS et Cie®



ANATRA PETITE LOUNGE CHAIR

DESIGNED BY PATRICIA URQUIOLA
THE ANATRA COLLECTION

FRAME LIST PRICE STARTING AT: \$3,247

Product Number 706-03-110-74-62

FRAME: ALUMINUM WITH JANUSCOAT. SEAT: WEAVING BANDS 35MM. BACK: HANDWOVEN OLEFIN ROPE. 304 STAINLESS STEEL HARDWARE. NYLON GLIDES. CUSHIONS REQUIRED, SOLD SEPARATELY.

W	39.25"	100 CM
D	34.25"	87 CM
H	29.5"	75 CM
SH	8.25"	21 CM
AH	29.25"	74 CM
OSH	15.25"	39 CM
WEIGHT	55 LBS	25 KG

FINISH SHOWN: OXFORD/CYAN

STOCKED FINISHES



NON-STOCKED FINISHES



ENVIRONMENTS



HIGHLIGHTS

